

# Connecting the Past with the Future

Griha  
2018

Ashok Lall

# Polarities ?

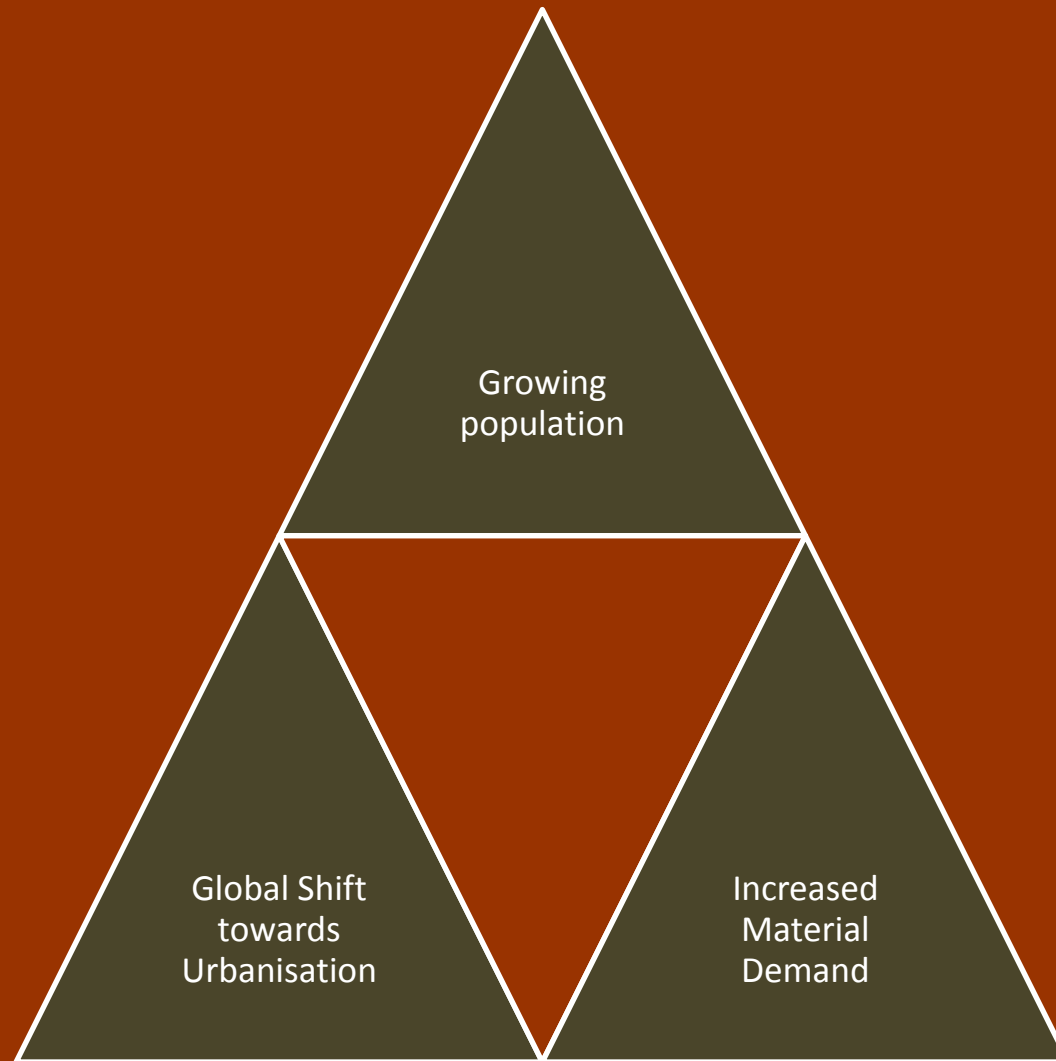
Modernity

Tradition

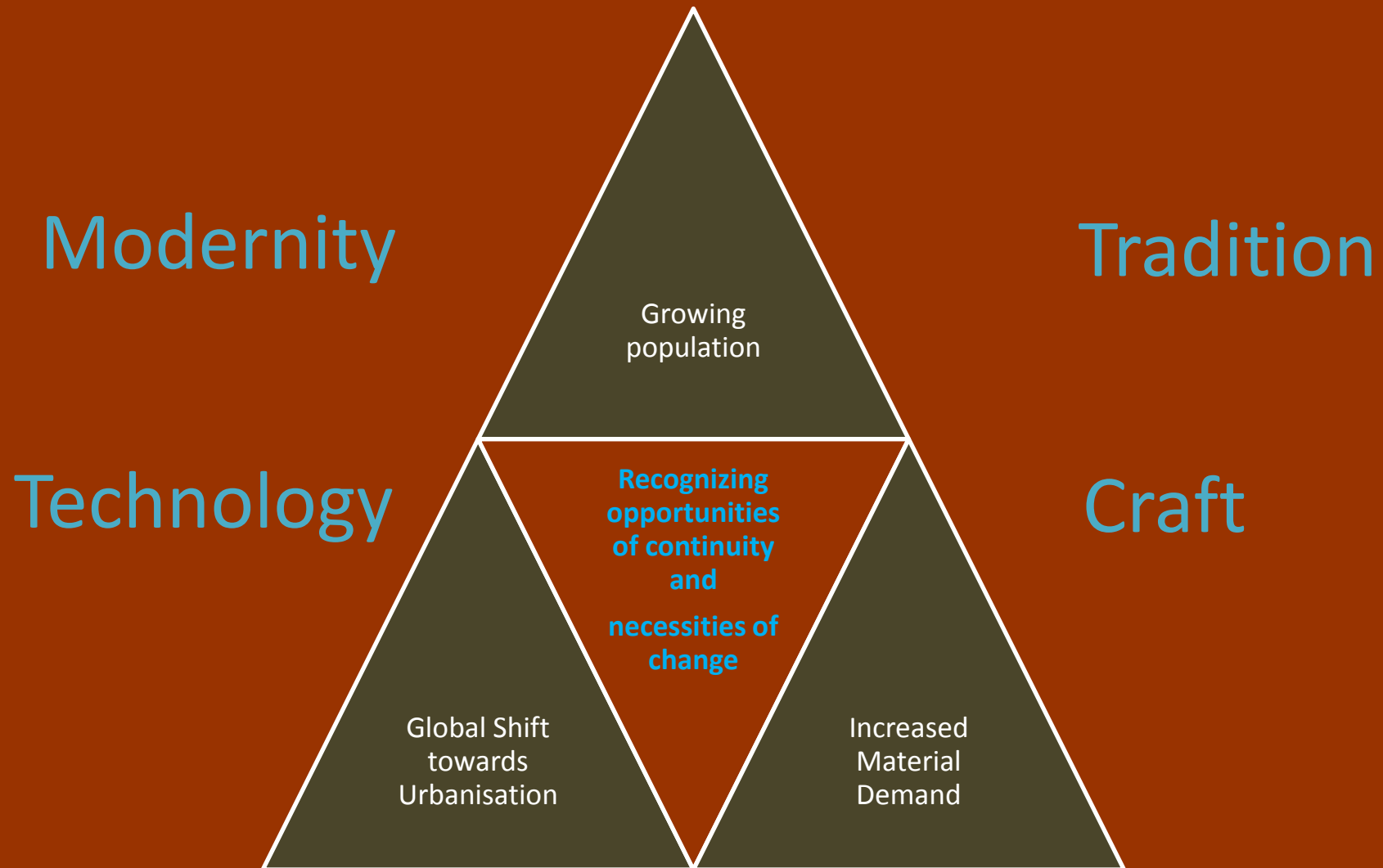
Technology

Craft

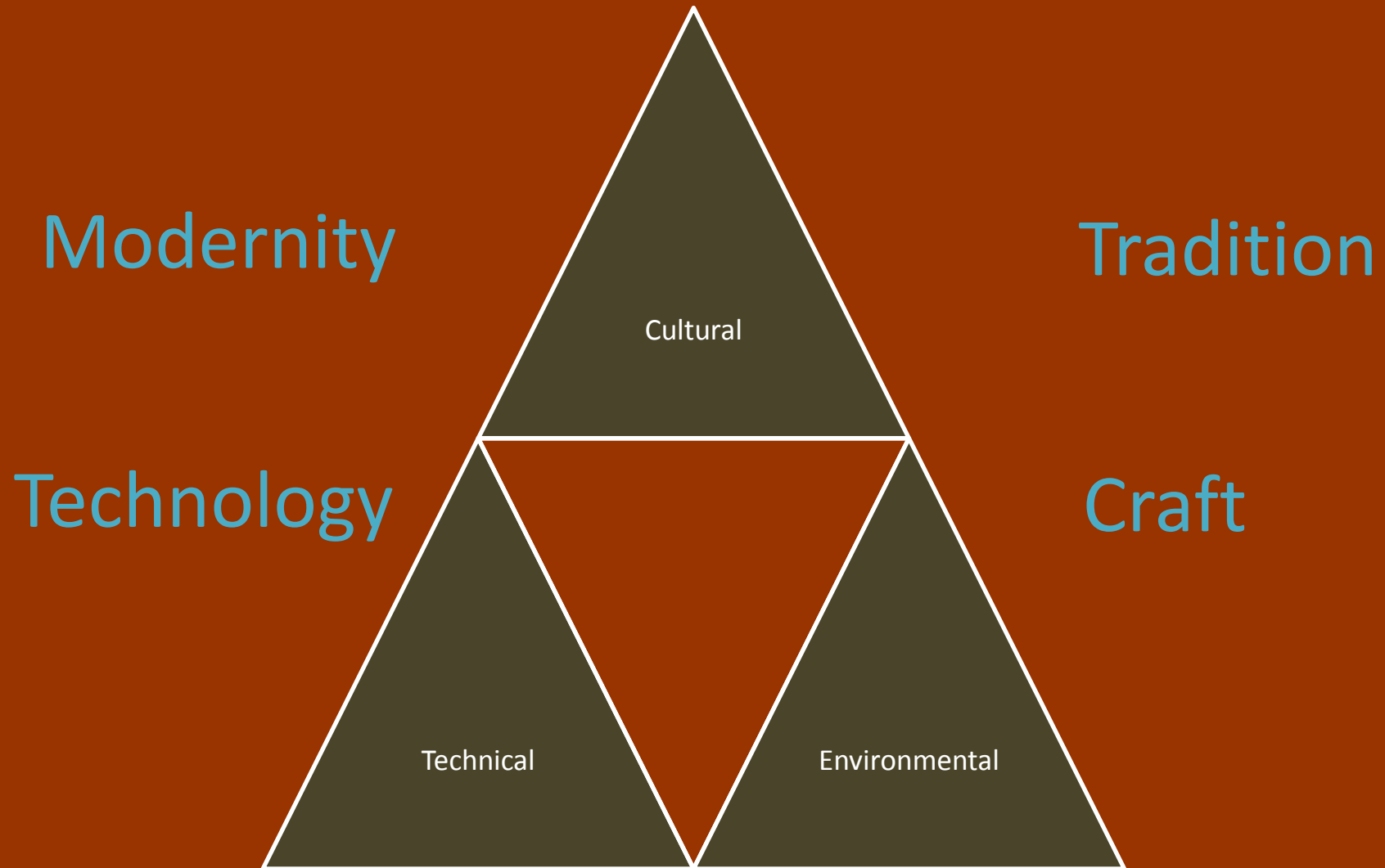
# Imperatives of Change



# Synthesizing Approach



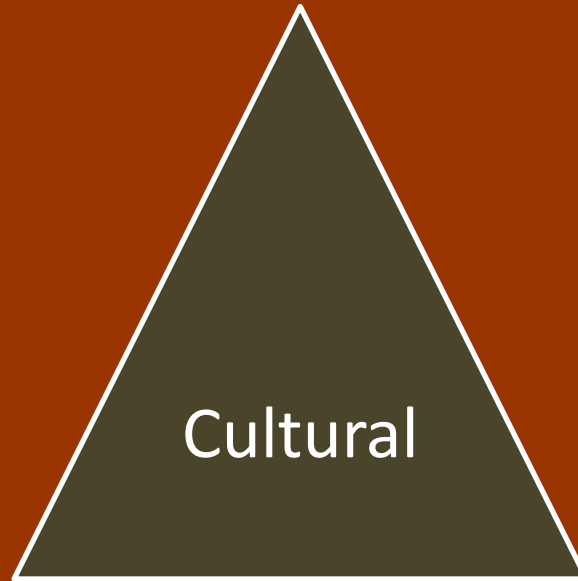
# Three dimensions



# Three dimensions

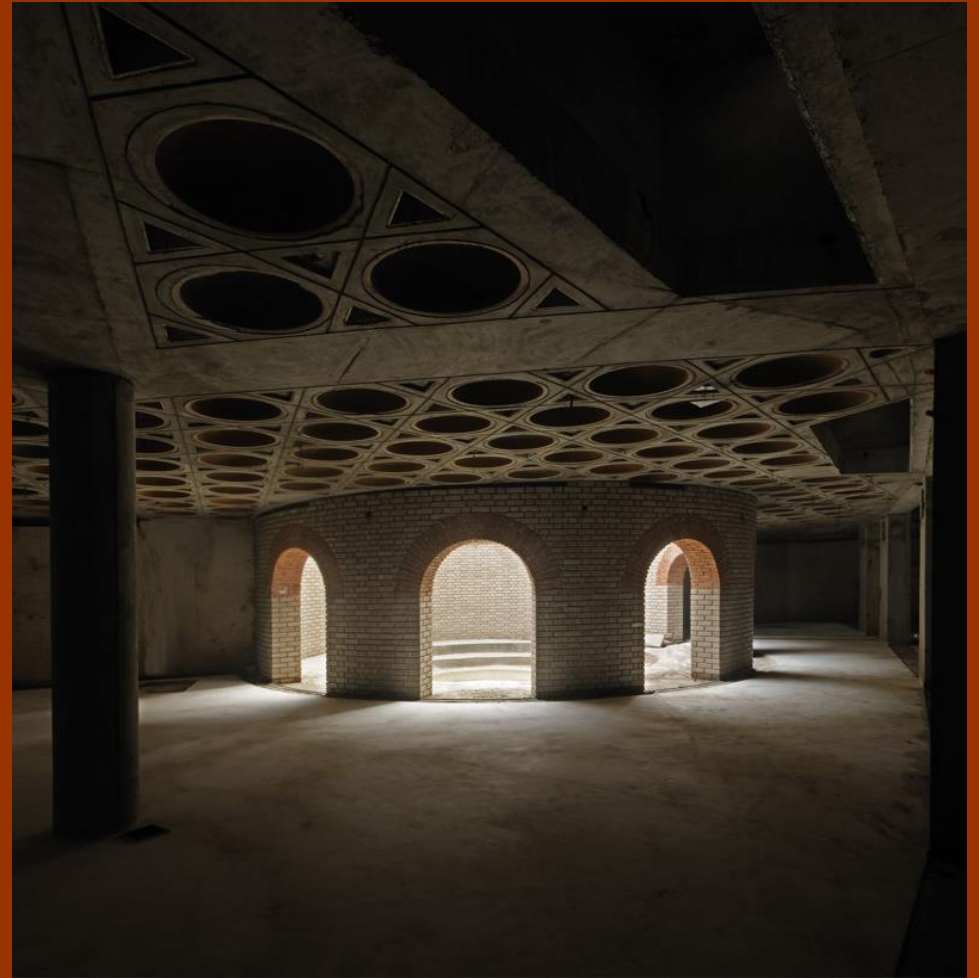


Technology



Craft







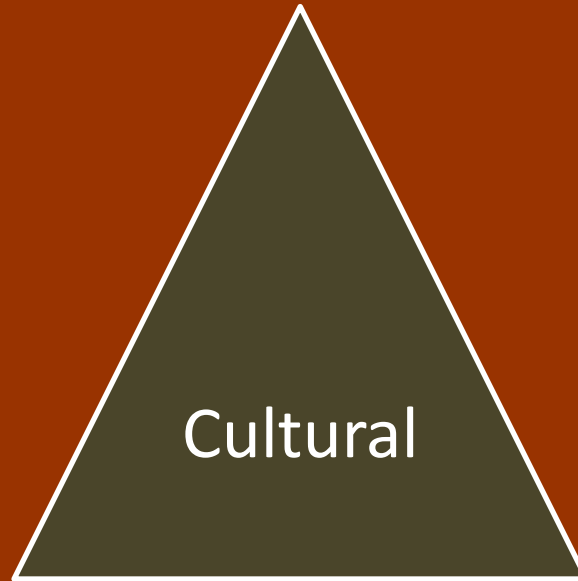




# Three dimensions



Motor car city



Walkable City



The conception of a city as land for exploitation of land rent through real estate must be disciplined by the environmental imperative

## MULTI STOREY MUMBAI



THE HIGH-RISE HIGH-DENSITY CITY WILL BE UNSUSTAINABLE; HEAT ISLAND EFFECT WILL RAISE TEMPERATURES; POLLUTION WILL RISE; GREENERY WILL REDUCE; STREETS WILL BE CONGESTED; IT WILL BE AN ANTI-SOCIAL CITY.





Jaipur, India

A high density low-rise, small to medium grain morphology of the city is its optimal form from the Economic, Social and Environmental points of view



Berlin Germany

## DNA

Of low carbon cities

- LOW/MEDIUM RISE
- HIGH DENSITY
- SMALL GRAIN





POST DOC / PHD  
/ FELLOWS

SCHOOL

DIRECTORS  
RESIDENCE

STAFF RESIDENTIAL

FRUIT  
ORCHARDS

FRUIT  
ORCHARDS

HOSTELS

DINING

AMPHI.

Guest  
House

FIELDS

FRUIT  
ORCHARDS

AUDI.

LIBRARY

ADMIN / ACADEMIC

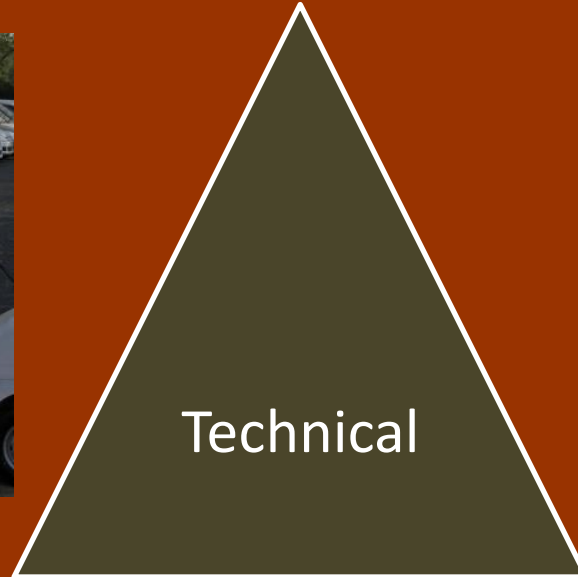
SOCIAL  
INCLUSION



# Three dimensions

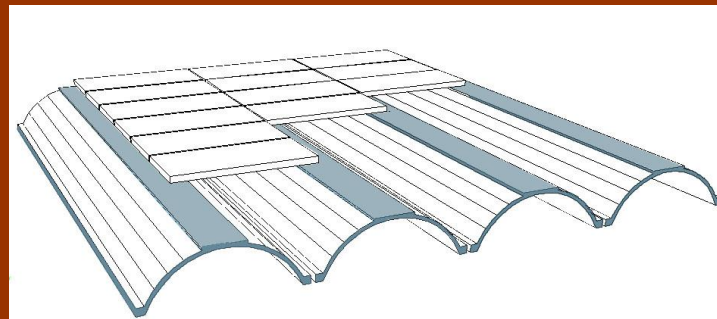


Standardized  
mass Production



Slow Variable  
Production





## INDUSTRIAL PRINCIPLE

- Efficiency and reliability with low investment.
- Technologies to create wealth and knowledge locally.
- Ferro cement
- Shallow masonry dome.
- Precast concrete screen
- Stabilized mud block
- Stabilized Fal-G block
- Terracotta screen
- woodwork for doors and windows





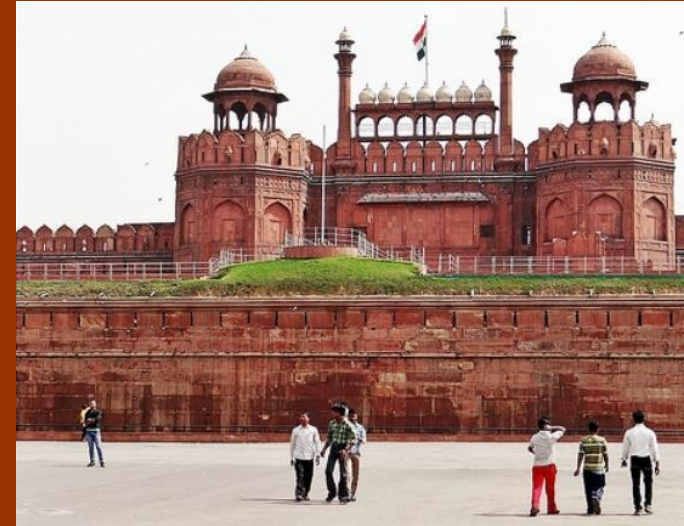
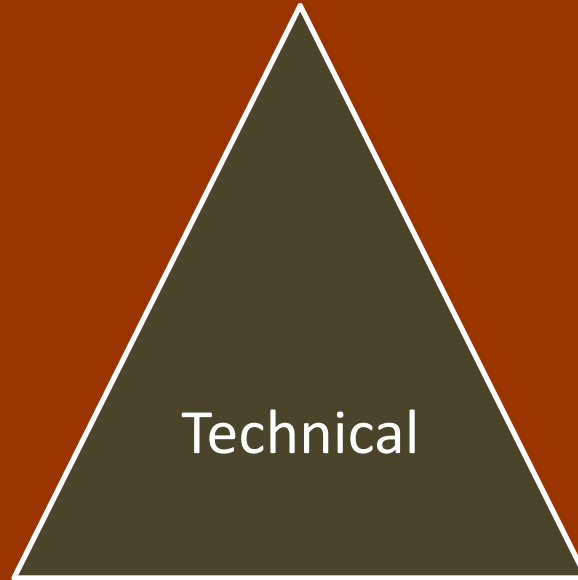




# Three dimensions



Energy intensive  
materials



Natural materials





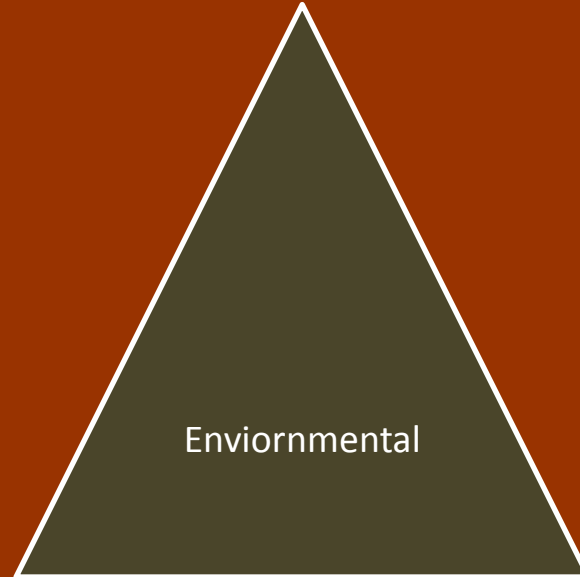




# Three dimensions



Artificial  
Environment's



Adjusting to  
Natural Cycles



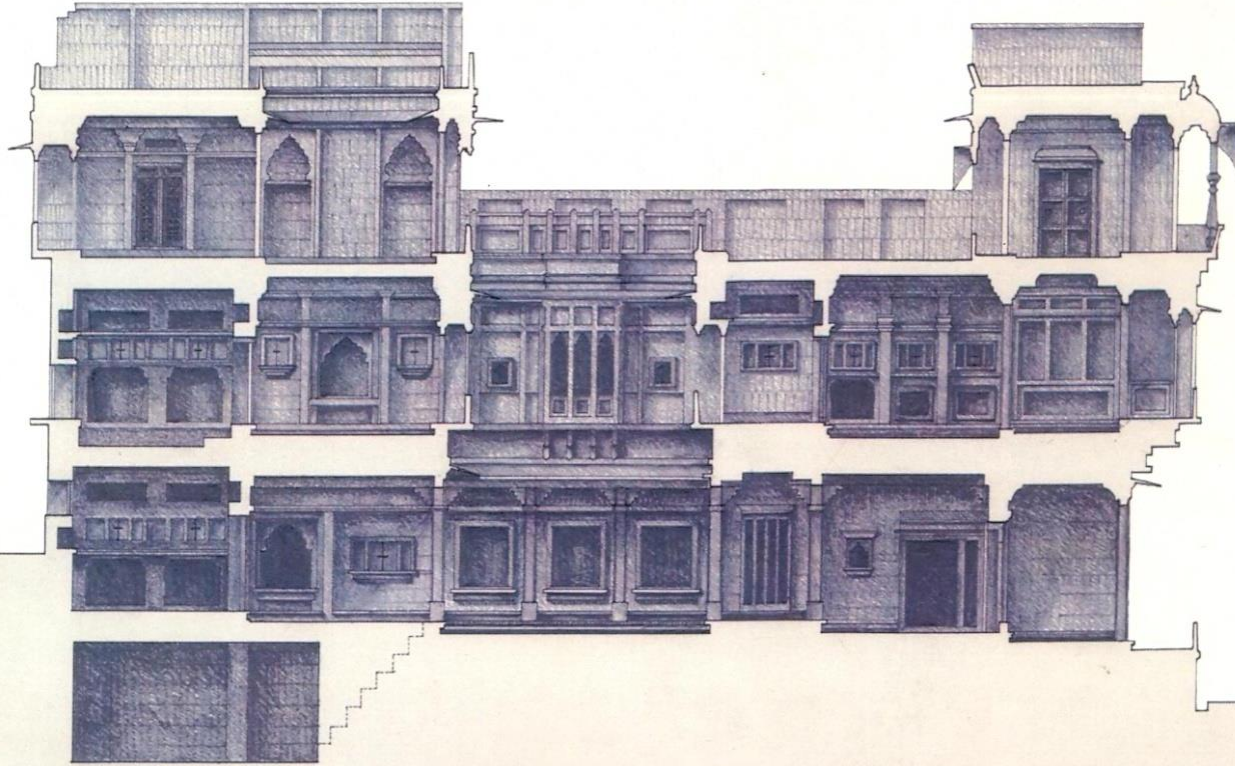


## ASSUMPTION

...that all those practitioners in the field of the built environment who have the benefit of seeing the connection of their metier with life sustaining natural systems are willing to evolve their practice, their craft, their art, in recognition of their share of responsibility toward Life...



## TRADITIONAL ARCHITECTURE OF THE HOT-DRY AND COMPOSITE CLIMATES



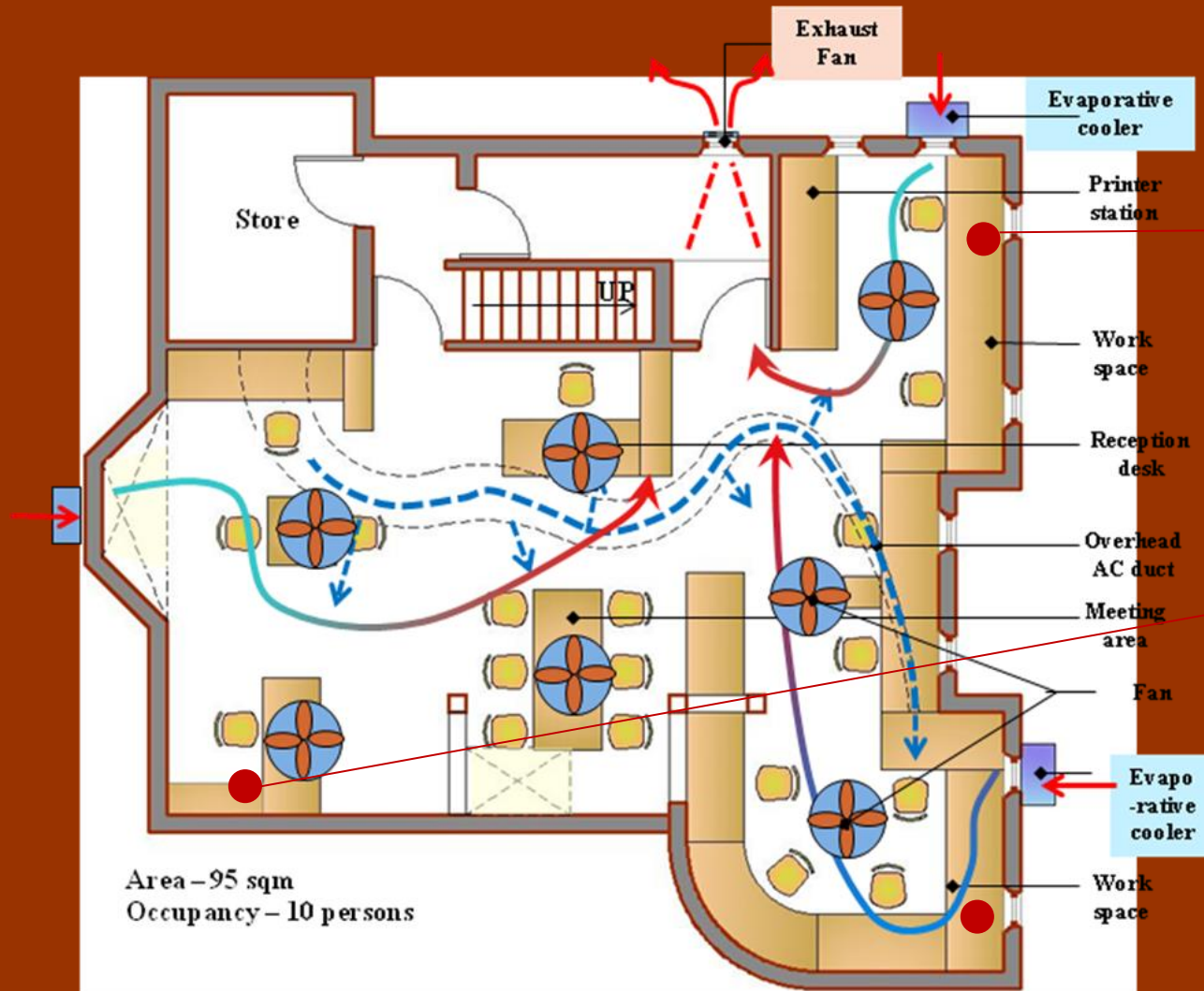
MIND BODY TOOL CONTINUUM

THERMAL COMFORT AND BUILDING FABRIC

PIERCING WALLS FOR DAYLIGHT



## COMBINATION OF COOLING SYSTEMS





**SLAB TEMPERATURE : 26°C(SUMMER)  
TO 20°C(WINTER)**

**COOLED FRESH AIR DUCTS (19°C - 22°C)**

**CEILING FANS (UPTO 2°C ADDITIONAL COOLING)**

**F.H.**

**STAIRS**

**FLOOR - 300**

**TOILET FOR HANDICAPPED**

**GENTS TOILET**

**LADIES TOILET**

**AIR HANDLING UNIT**

**SHAFT**

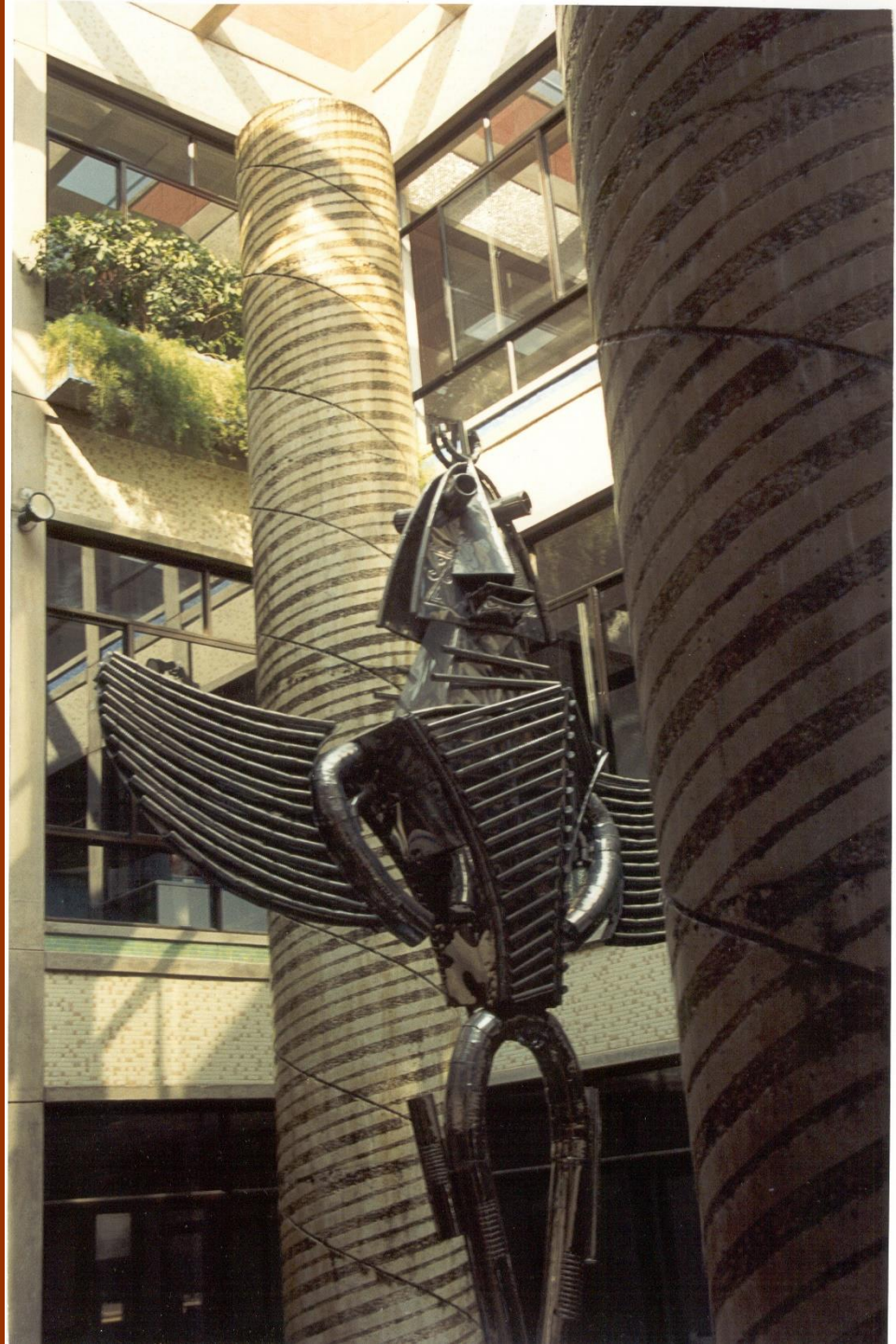
**28**  
27  
26  
25  
24  
23  
22  
21  
20  
19  
18  
17

**28**  
29  
30  
31  
32  
33  
34  
16  
15

## CEILING FANS & COOLED FRESH AIR





















*Vernacular traditions embody the economic principle of efficiency in ordering life according to the cycles of the seasons and day and night and in having a measure of “want” that does not exceed available resource .*

**This is the challenge for innovation ; innovation of a way of life – for the majority of our citizens – as we now move into a novel modernity .**