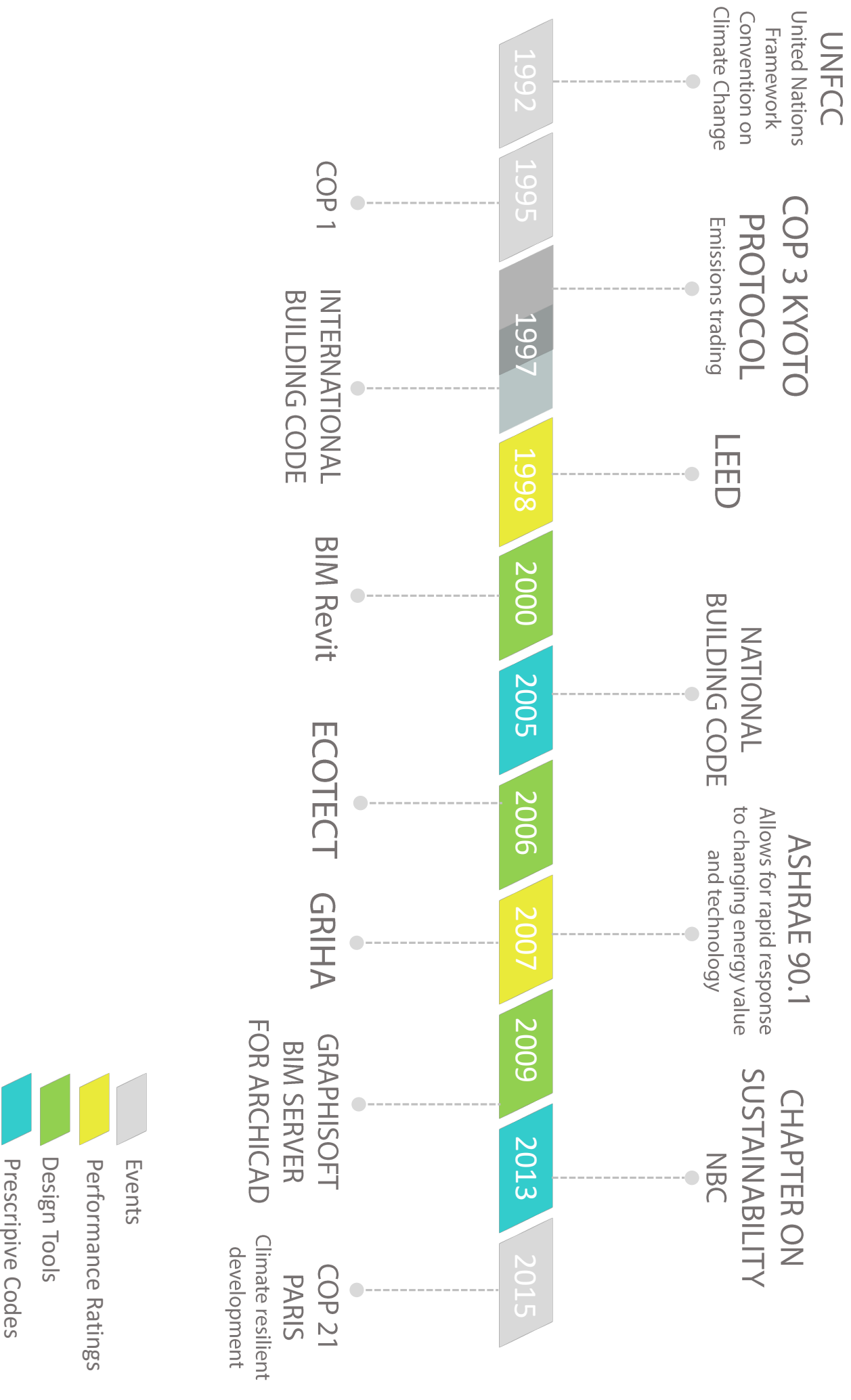







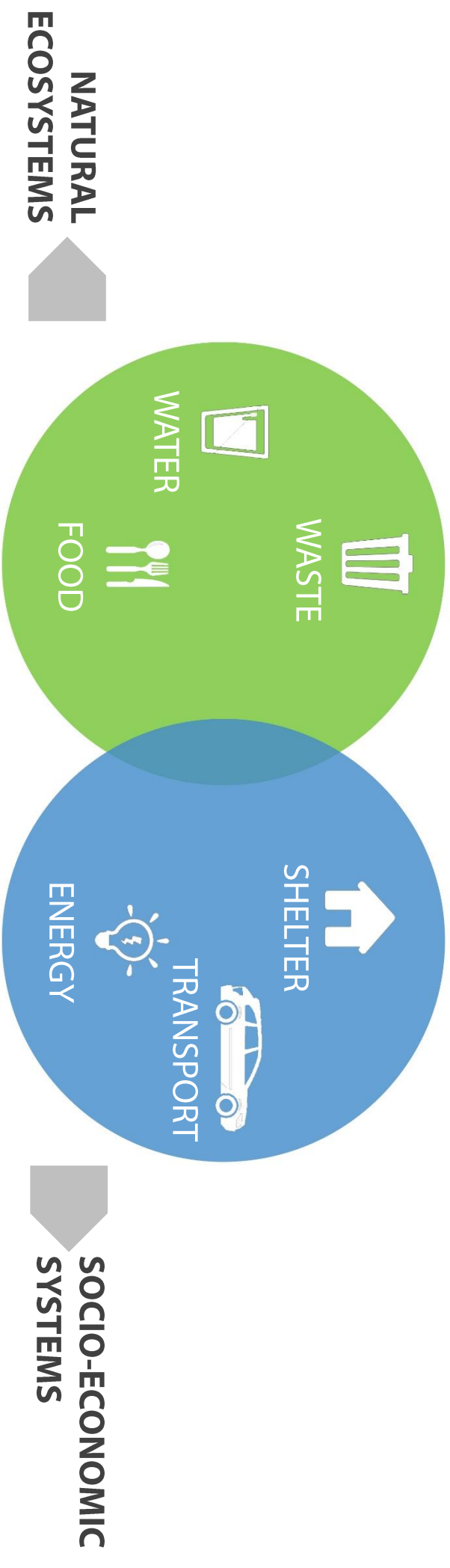
ETHICS AND AESTHETICS OF SUSTAINABILITY



-  Events
-  Performance Ratings
-  Design Tools
-  Prescriptive Codes

MAJORITY URBAN POPULATION

GLOBAL	INDIA
2008	2050



2008
UNEP TEEB Report by Pavan Sukhdev
NATURAL CAPITAL

CRITICALITY OF URBAN SUSTAINABILITY

FINANCIAL CHOICES



IS THERE ENOUGH TIME?

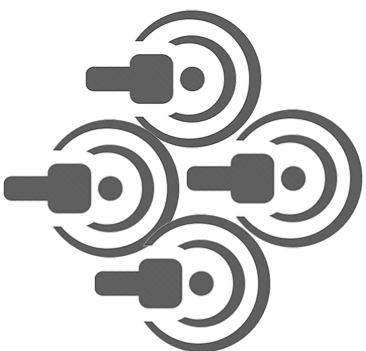
LIFESTYLE CHOICES



AESTHETICS OF URBAN SUSTAINABILITY



USER
EXPERIENCE



SOCIAL
EXPRESSION



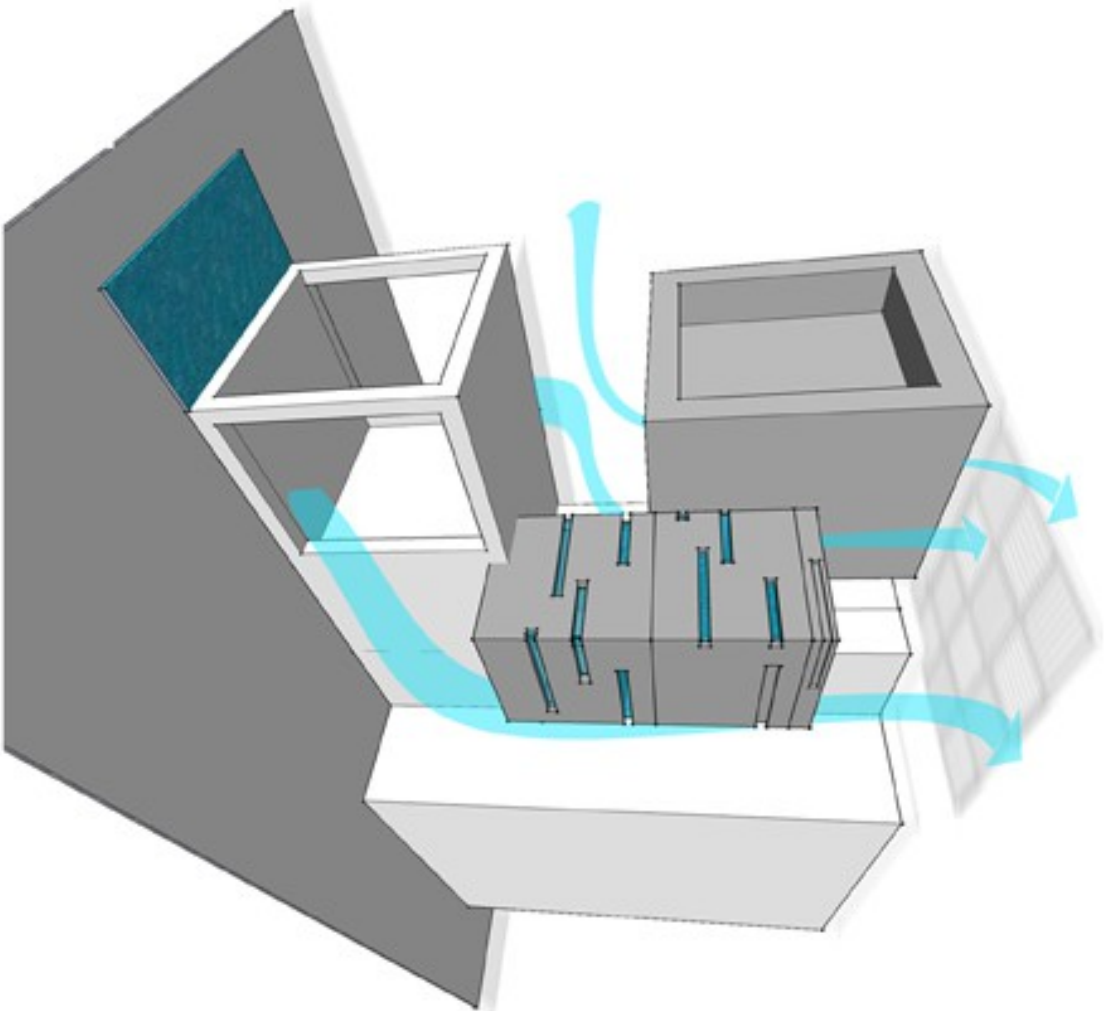
CULTURAL
PRACTICES

ROLE OF THE ARCHITECT / URBAN
DESIGNER

SUSTAINABLE LIFESTYLES



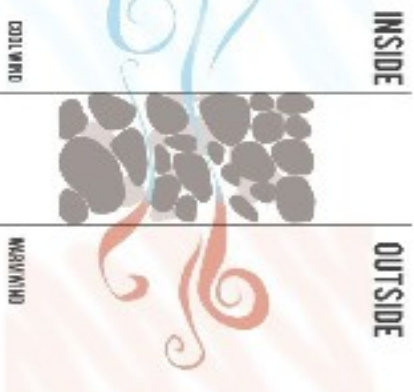
anagram architects



KINDRED



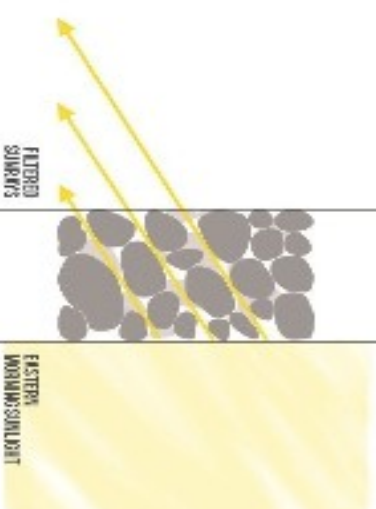
From outside, cool the inside of the Gabion Deck



COOL WIND

WARM WIND

The east side of Gab on floor is the Eastern side of it

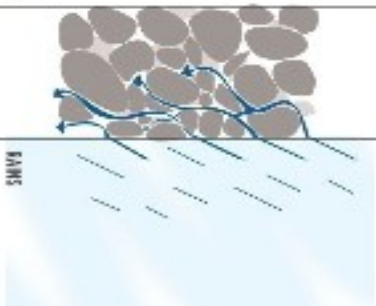


FILTERED SUNLIGHT

EASTERN WIND

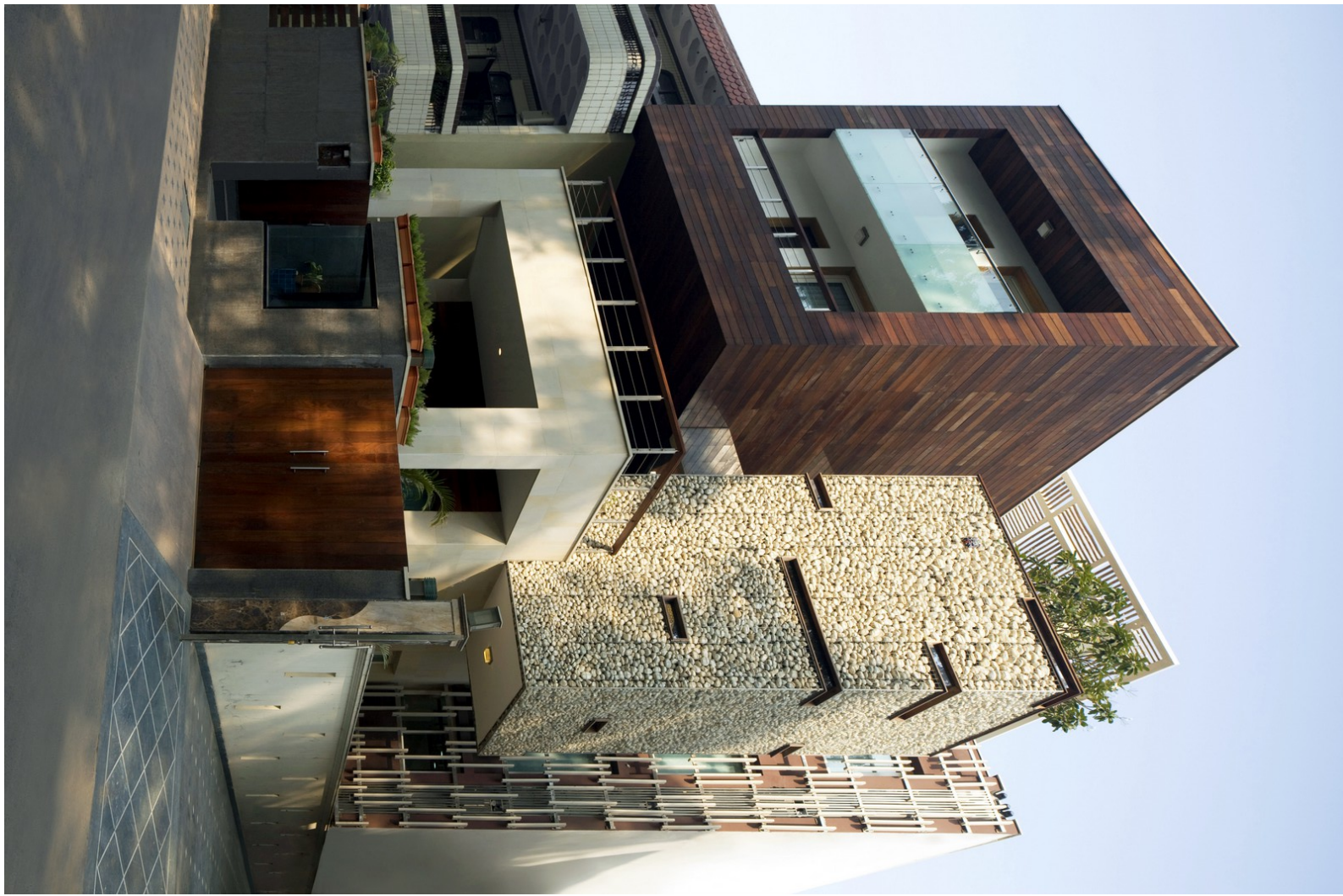
Water will be used to make it more in design through the mass of Gab on with a concrete and stone

DRYING WIND

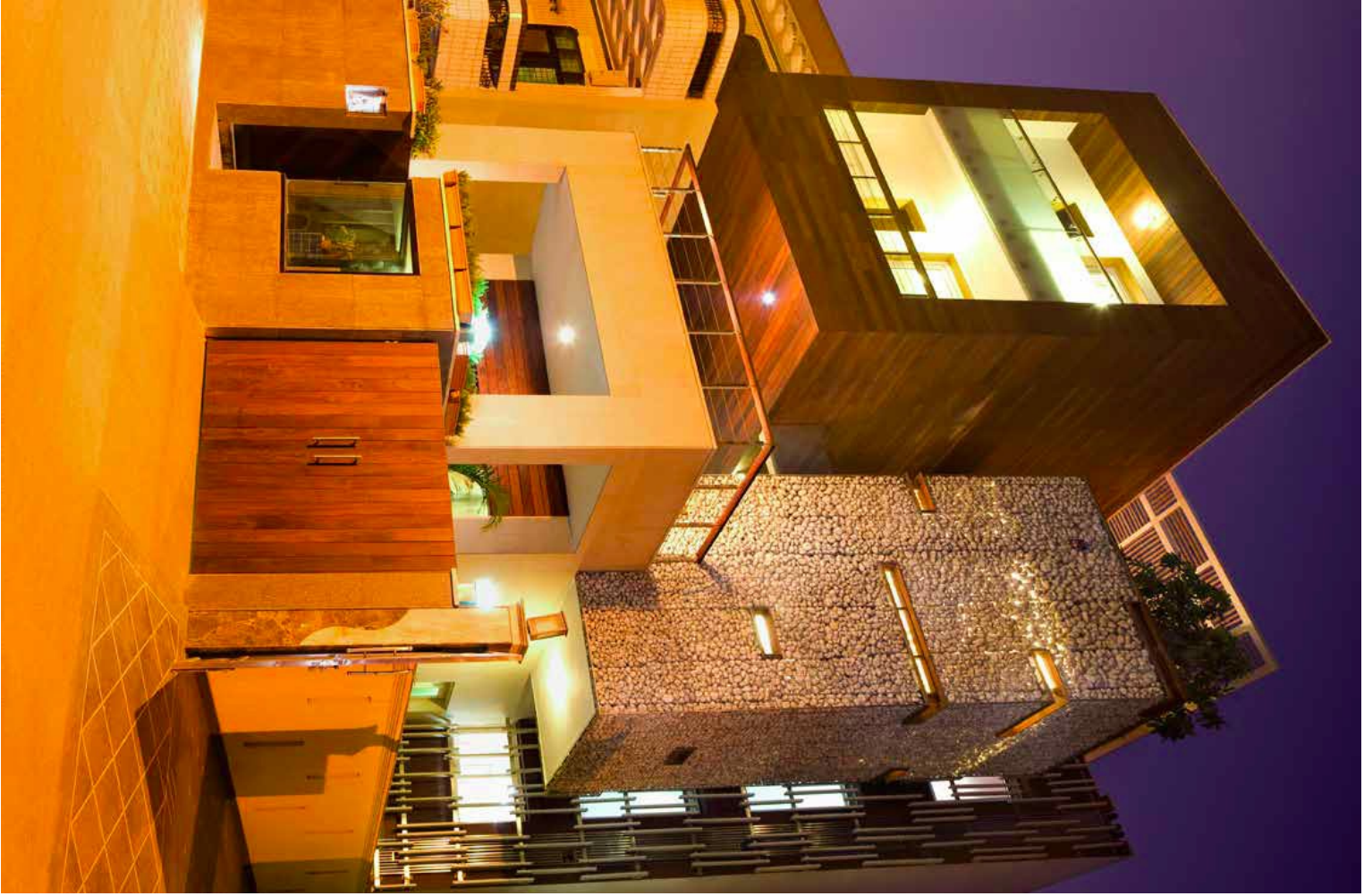


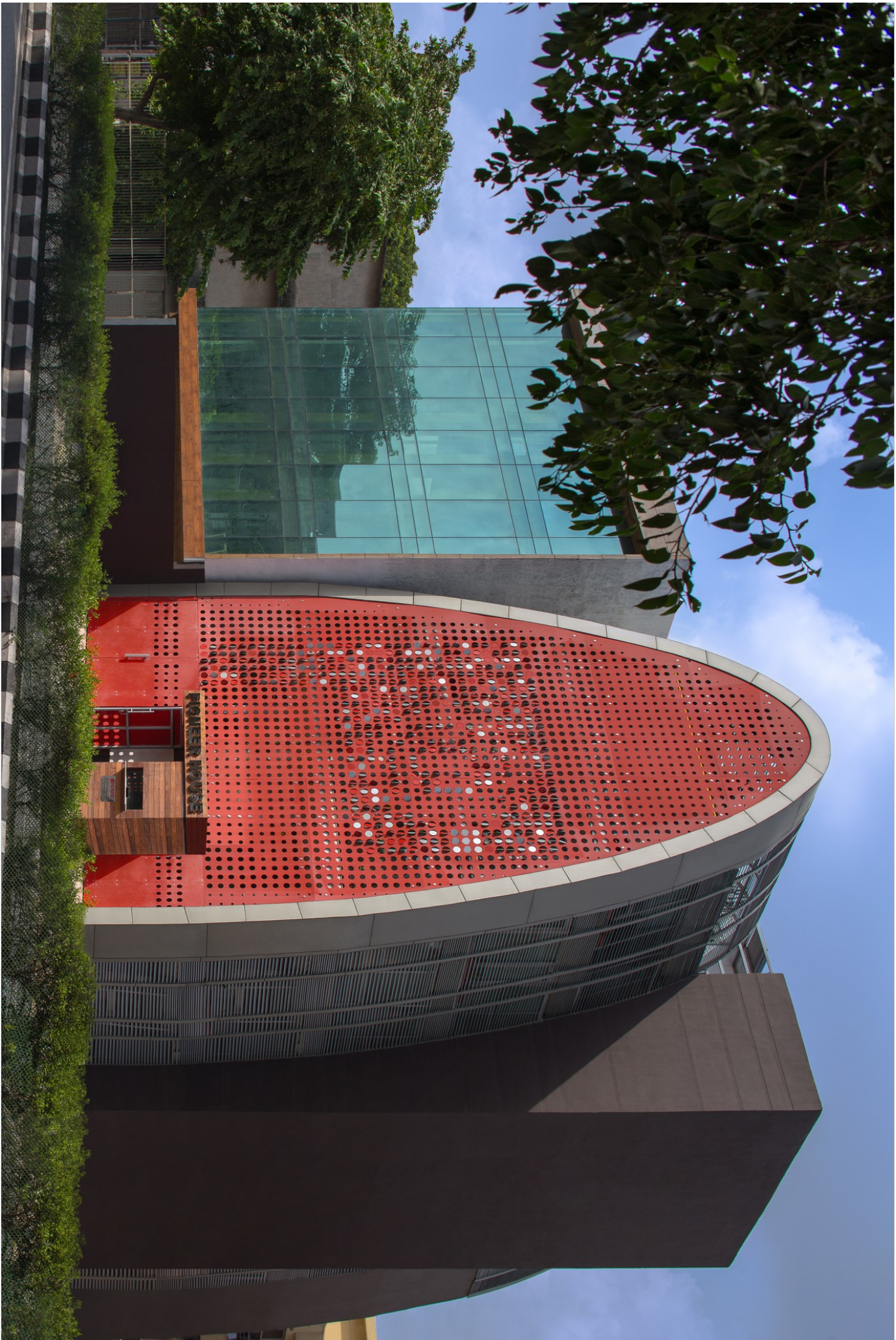
WIND

CLIMATIC BEHAVIOR OF GABION



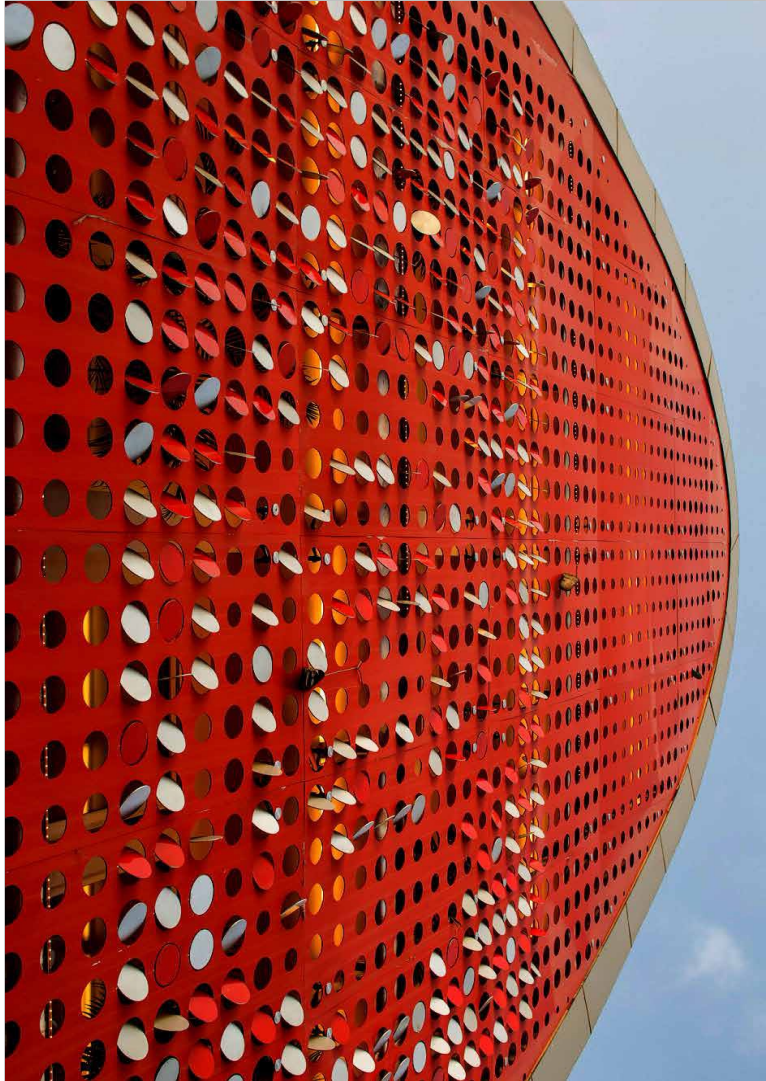
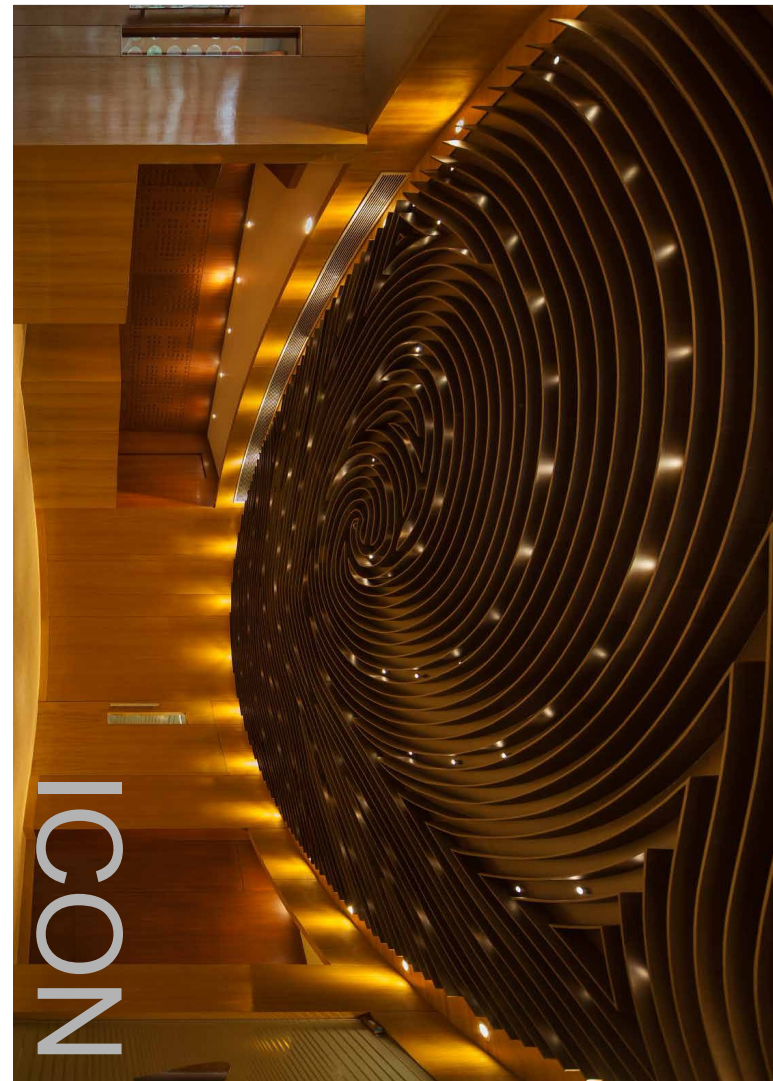
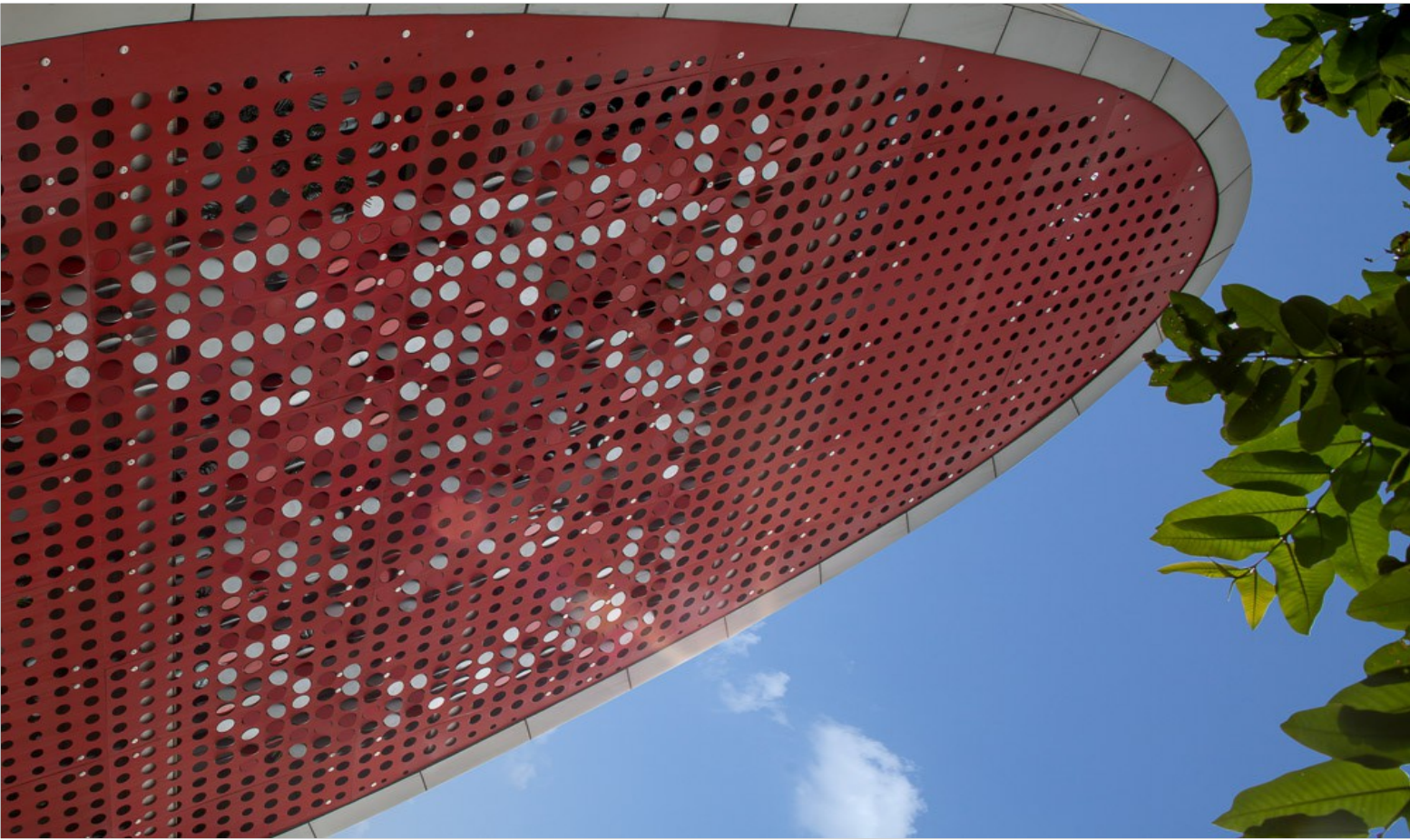
KINDRED



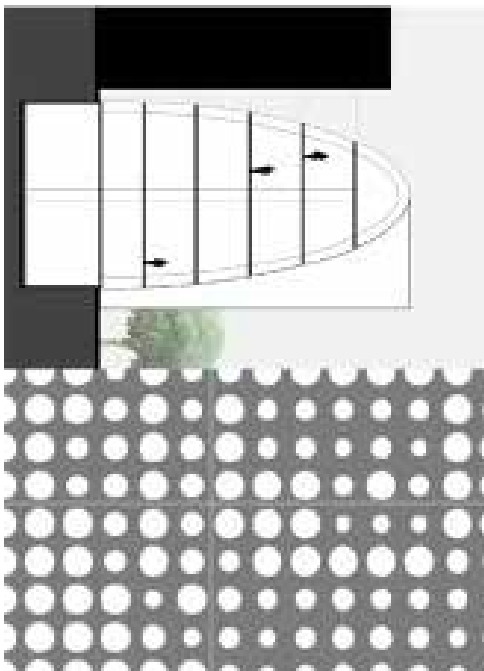


ICON

THE DIGIT



ICON



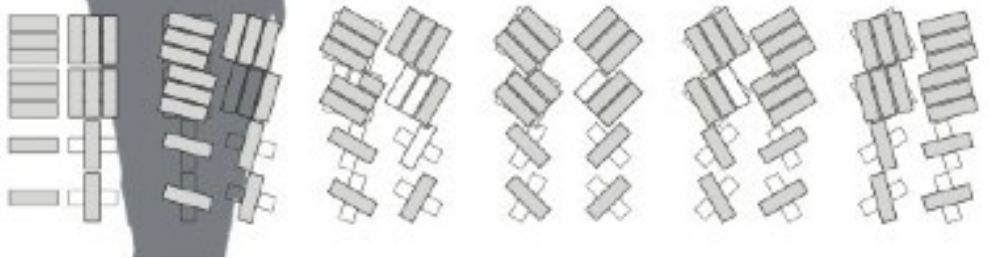


CONVERSE





BRICK COURSE DETAIL



CONVERSE





COMMUTE



CART:

पैदान

>

pedal

>

peddle



COMMUNICATE

CREATE



CONTENT

CLOUD



THE RING (T)RAIL PROJECT



Residential Zones



Delhi National Capital Region



Green & Heritage Zones



Institutional Zones



Commercial Zones

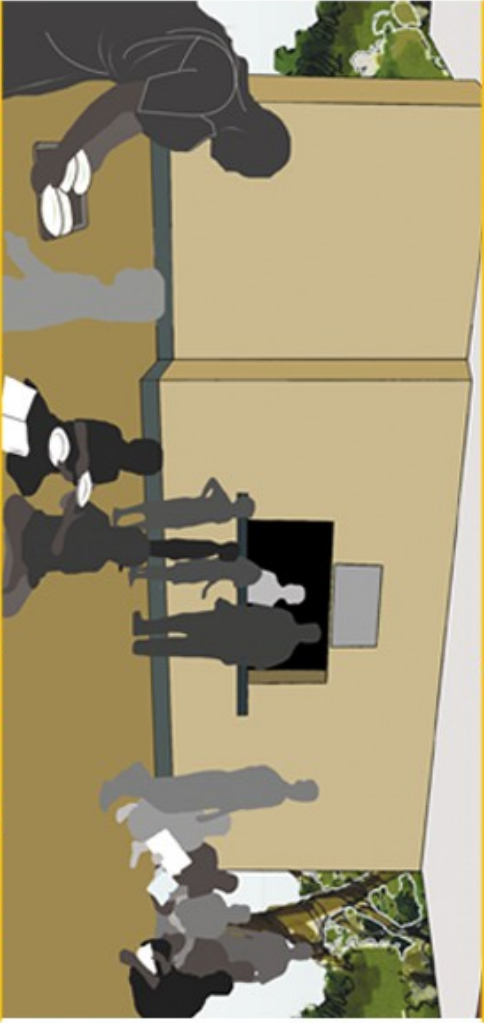


- Ring Rail
- Intersecting metro line
- Intersecting road
- Historic monument
- Ring Rail station
- Bus stop
- Zoo
- Entertainment
- Sports facility
- Educational institution
- Market
- Greens
- Heritage site

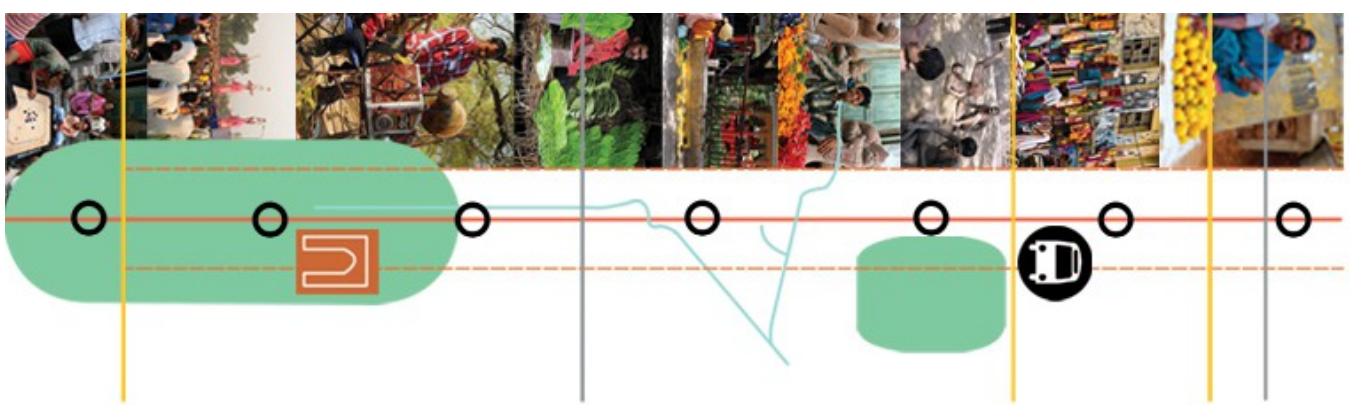
The natural & informal street-based urbanism of Delhi has been superseded by motorised traffic to the detriment and exclusion of a majority of the city's population



Slow non-motorised traffic replacing an underutilised railway track to revive informal street culture and to encourage engagement with the natural & historic precincts



Defunct railway stations used as training & welfare centres run by cooperatives of informal vendors



- Ring Rail
- Intersecting road
- Intersecting metro line
- Drain
-  Bus stop
-  Ring Rail station
-  Historic monument
-  Greens

CLOUD

A digital information cloud powered by collective participation and accessed via cell phones encourages communication between informal goods and service providers and their customers



1G cloud: send a text query



Cloud sends relevant information via text



2G cloud: #tag your favourite vendors



Interact with vendors via @tags



3G cloud: check in to your current location



Use QR codes to access cooperative website



- Ring Rail
- Intersecting metro line
- Drain
- Intersecting road
- Ring Rail station
- Bus stop
- Historic monument
- Market
- Educational institution
- Sports facility



The Food Lab
Collab: Anagram Architects, Osherson, The City Garden



CONSUME

CONSUME



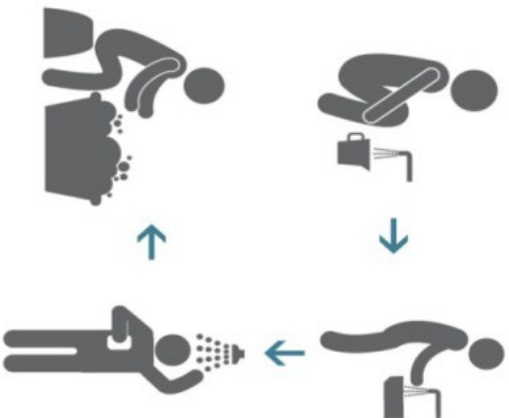
CONSUME



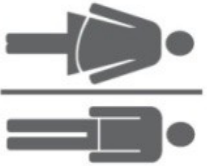


PUBLIC TOILETS

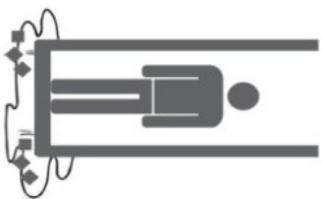
Public toilets close to informal settlements works community toilets.



POST-DEFECCATION ABLUTION



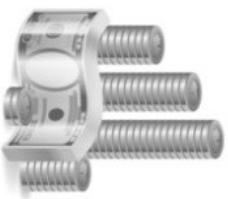
PRIVACY



UNPLEASANT PREMESIS



VANDALISM



CARETAKER'S ROLE



SEWAGE MANAGEMENT



SOLID WASTE MANAGEMENT



CONSTRUCTION



FMCG Retail

Abulion products: Soaps, mugs, toothbrushes



Segregation & Queuing



Exterior Texturing

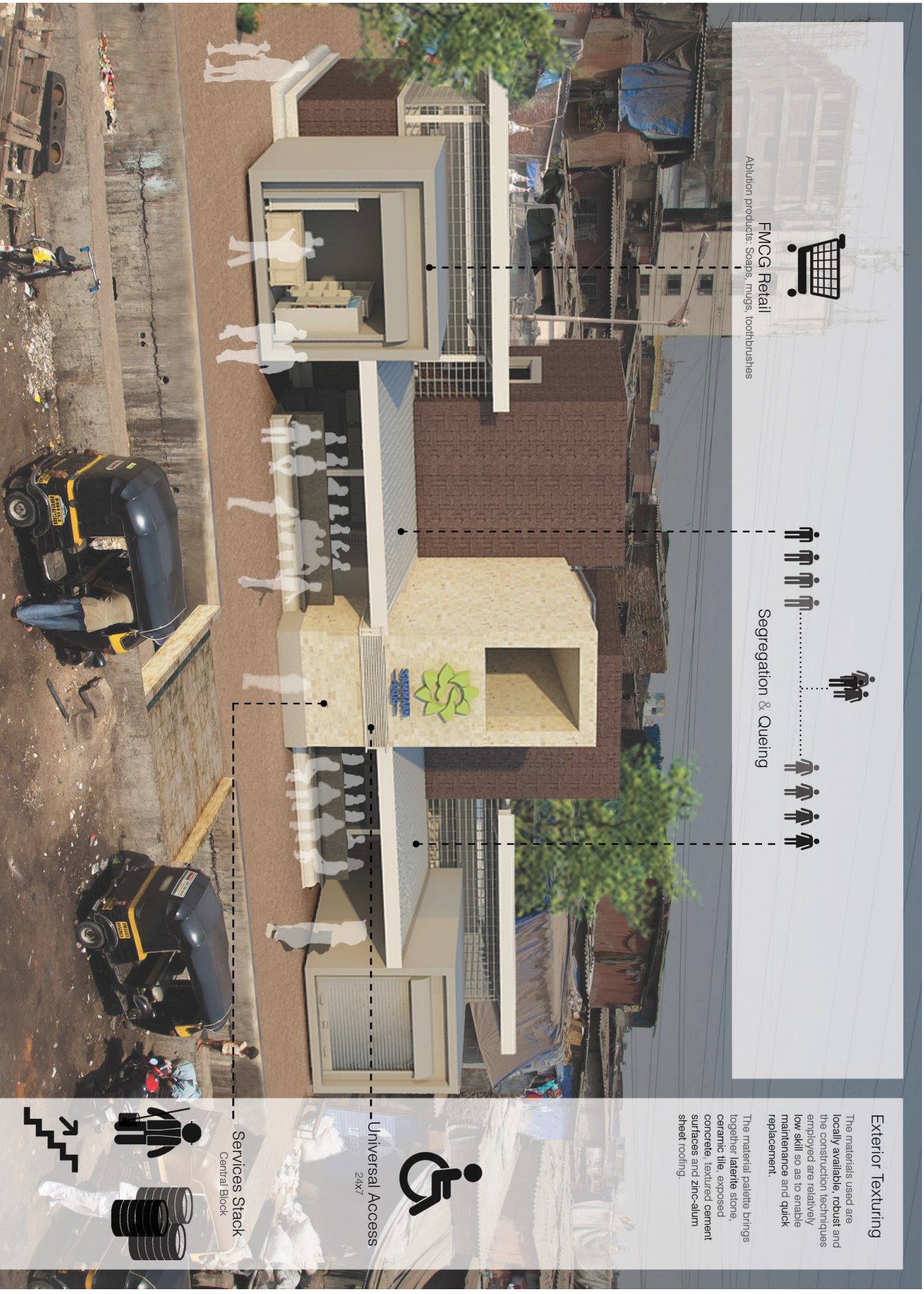
The materials used are locally available, robust and the construction techniques employed are relatively low skill so as to enable maintenance and quick replacement.

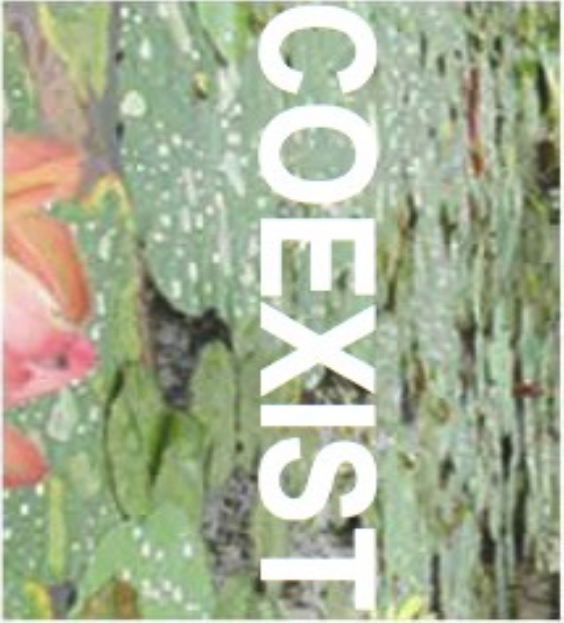
The material palette brings together laterite stone, ceramic tile, exposed concrete, textured cement surfaces and zinc-alum sheet roofing.



Universal Access 24x7

Services Stack Central Block

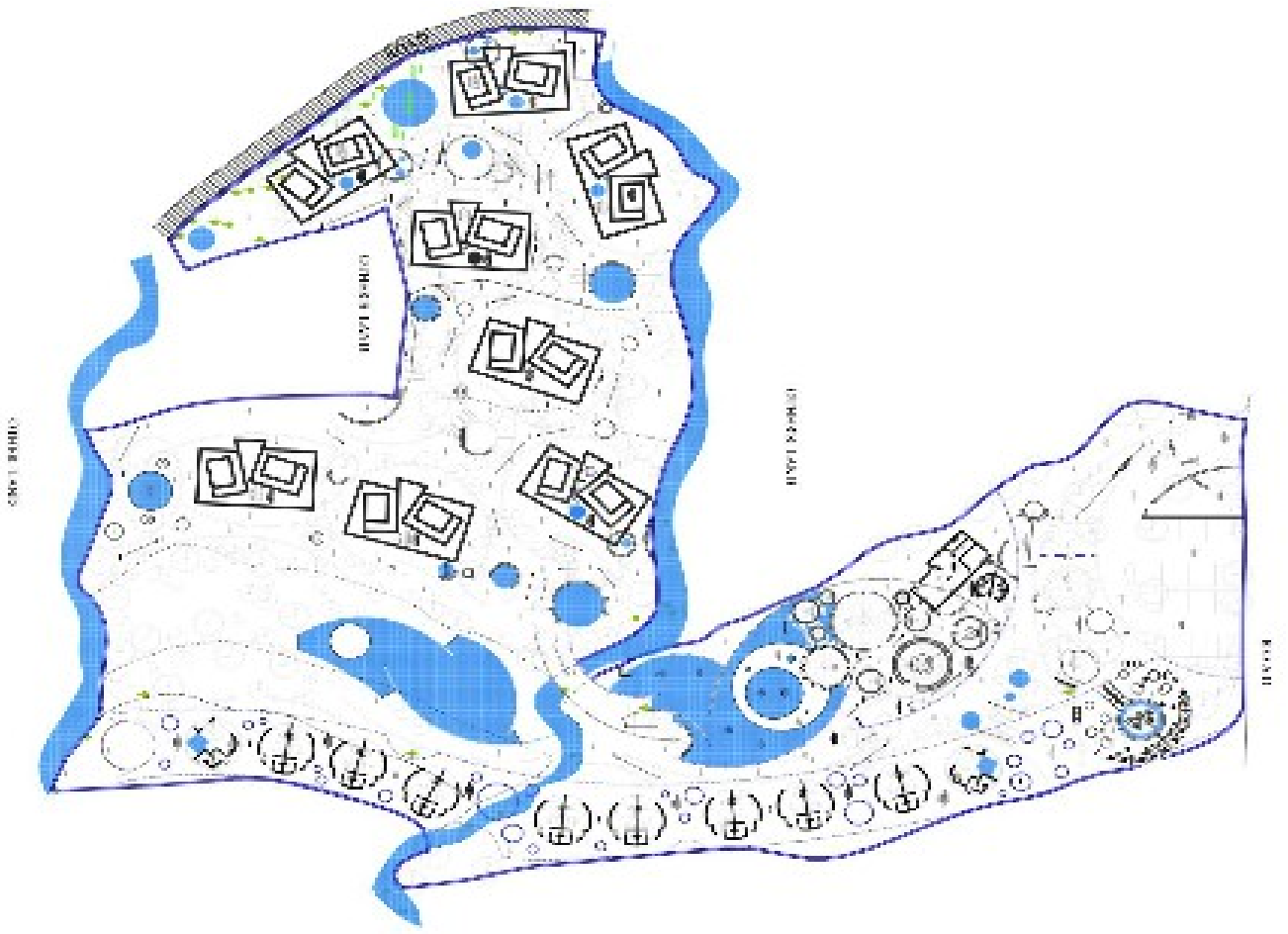


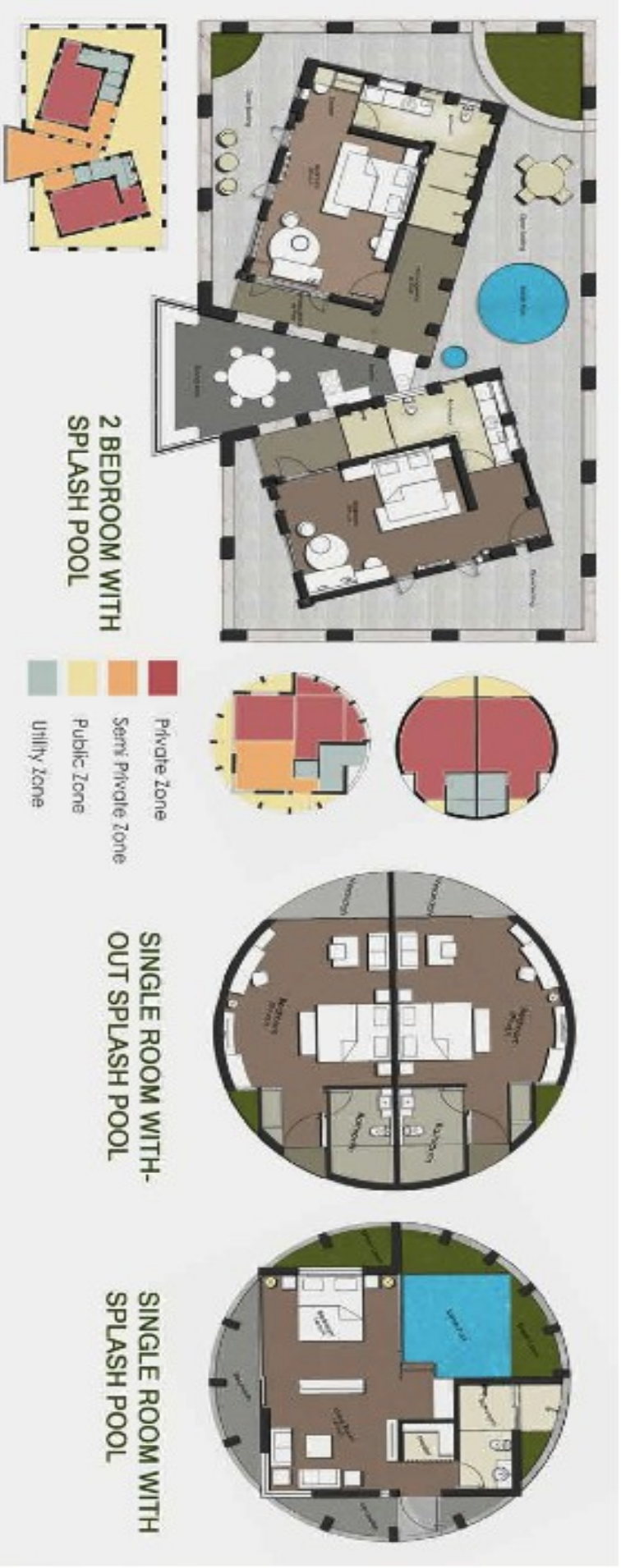


COEXIST









COEXIST









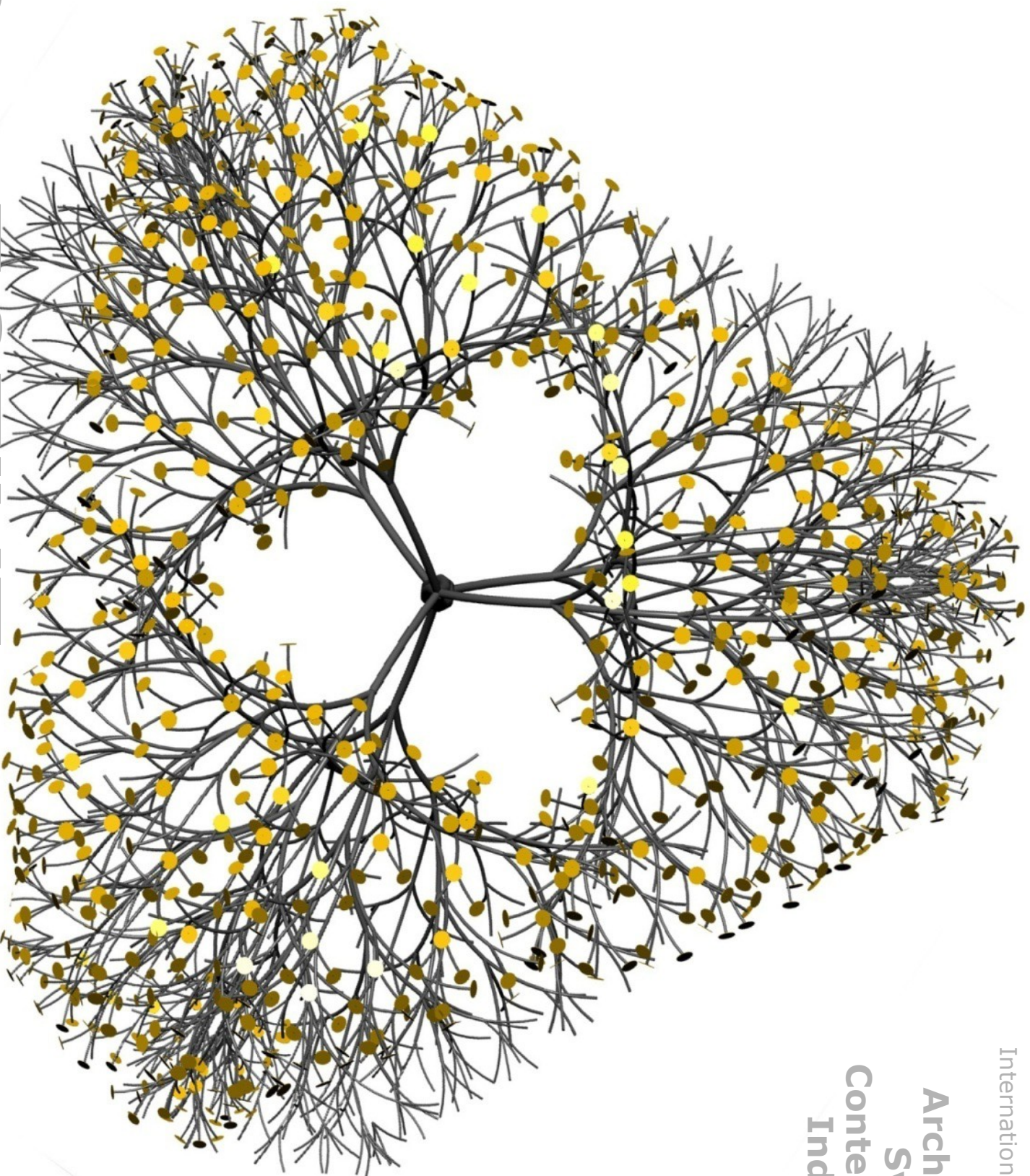






International competition
for an

**Architectural
Symbol of
Contemporary
India 2007**



COLLECTIVE

APPROACH

hierarchies to holarchies

federalism

diversity & plurality

polycentrism

multiculturalism

parts → wholes

objects → relationships

mechanistic → organic

fragmentations → networks

equity

participation

rights + duties

REGISTERS

ZEITGEIST

dynamic equilibrium

self-belief

exuberant aspiration

+

ENDURING VALUES

democracy

pluralism and social equity

cultural syncretism

SYMBOL

SANCTUM

sacred lands for founding values

TIMELESS

icon

SPACE

not a spire

heritage

community

secularism

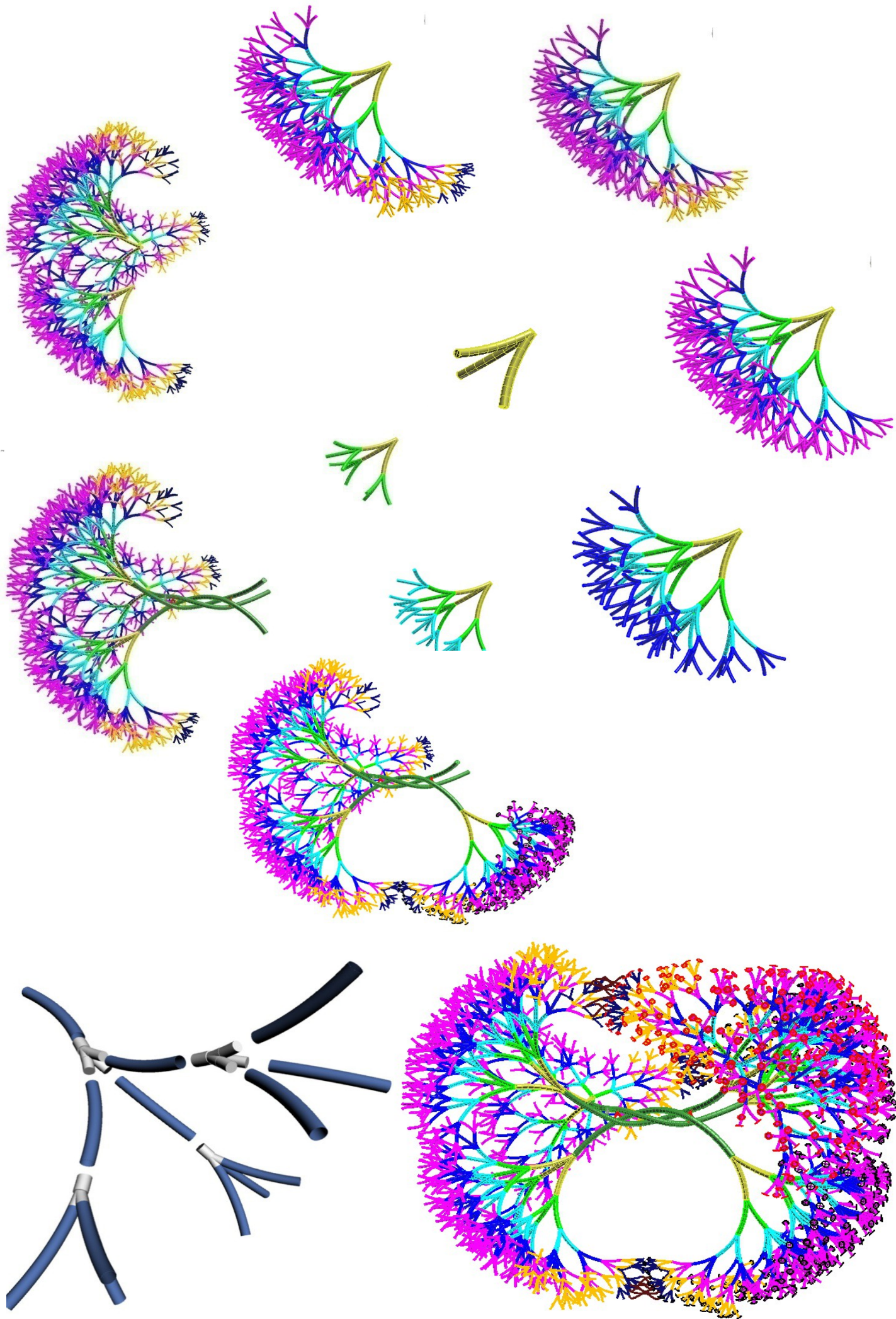
reciprocity

introspection

freedom

organic growth

interconnectedness



KALPA- VRIKSH

