







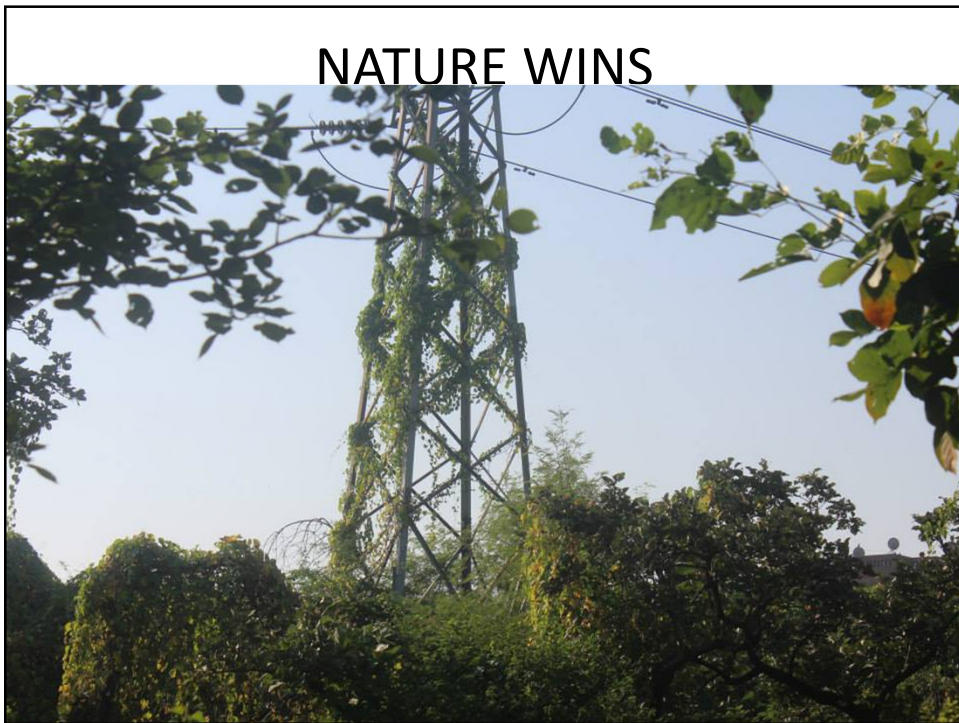
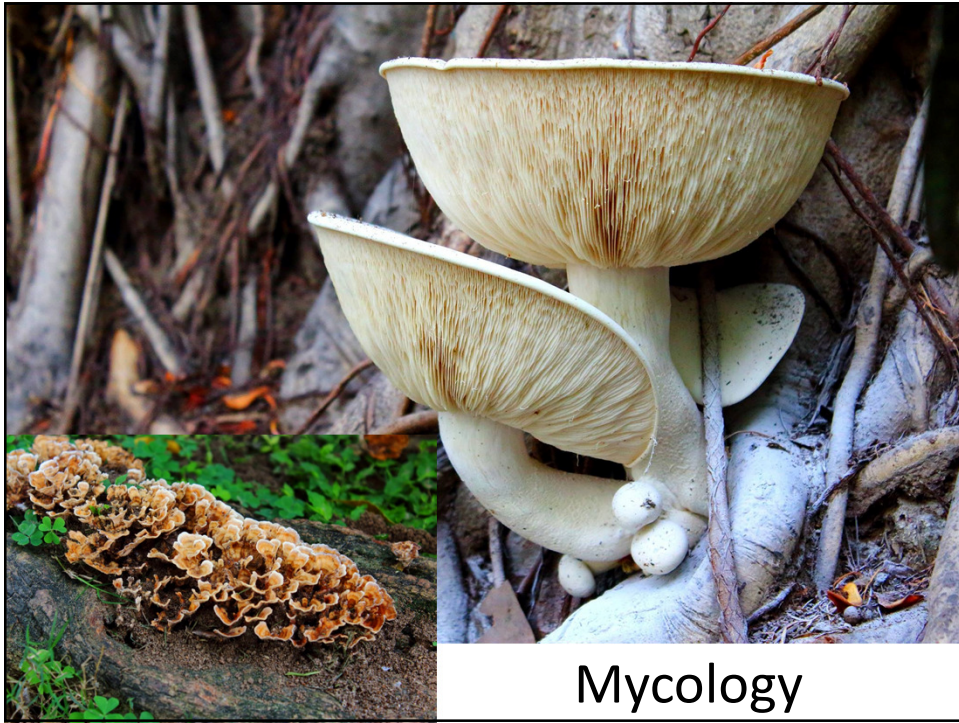






DIANTHUS











## Tree Climbing



## CAMPOUT



## Certificate of Appreciation



# Lodhi

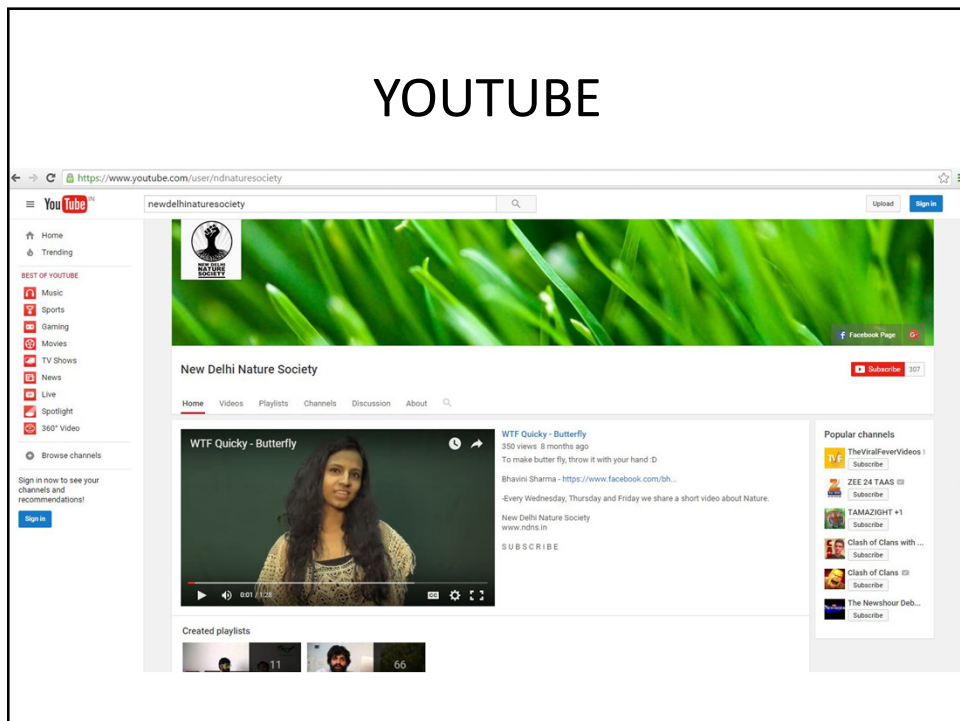


# Lodhi

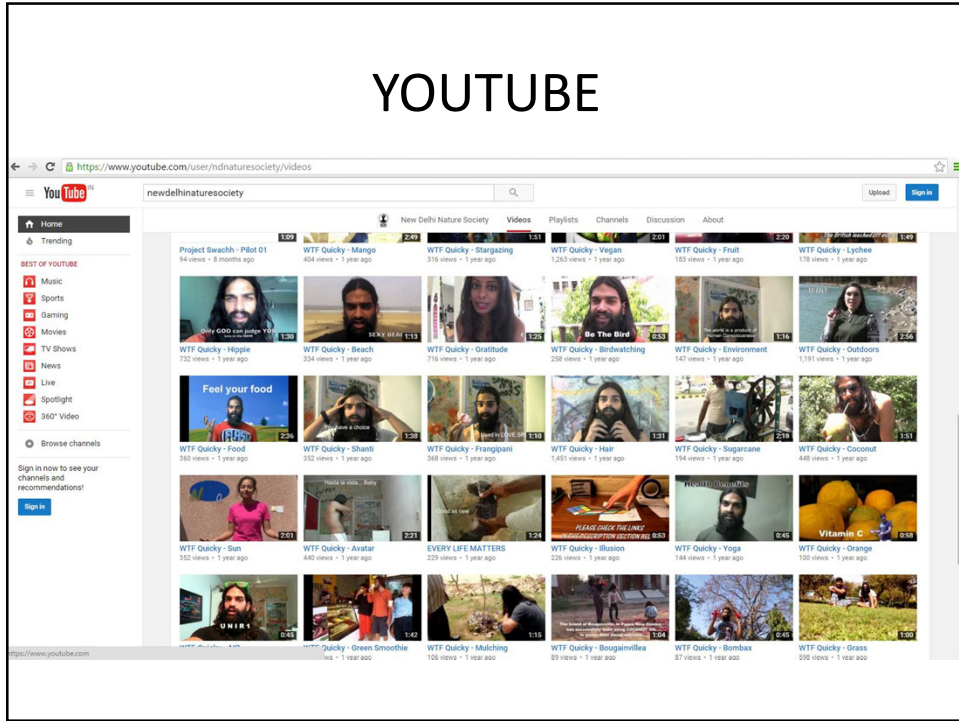




# YOUTUBE



# YOUTUBE



## New Delhi Nature Festival '15



## New Delhi Nature Festival '15



# New Delhi Nature Festival '15





## New Delhi Nature Festival '15



## New Delhi Nature Festival '15



## New Delhi Nature Festival '15



## Nepal Earthquake









## Nature Bazaar







## Planting with Peepal Baba





# ASOLA





# ASOLA



# Guerilla Gardening



# SEED BOMBS



# Select Citywalk





connected to another smaller tank called the rainwater harvesting pit. Whenever it rains, the excess water from the reservoir will overflow into the adjacent pit.

The rainwater harvesting pit will be coated with a Japanese geosynthetic mesh which will save water from getting sucked by the cement tank. The water also gets absorbed when it is transferred to the underground tank. All these measures will ensure that wastage is minimised," said a senior engineer, handling the project.

Underground pipes will be laid around the park to pump water from the tank into ten sprinklers at various points in the park.

The Commonwealth Park currently has 267 trees and 3,000 shrubs. And more than 15 saplings from various countries such as Thailand, Indonesia, Nepal and Pakistan are being planted there.

The area was earlier a cement godown that was converted into a park in 2010, ahead of the Commonwealth Games in the Capital. "The initial idea of the park was to plant a sapling from each of the Commonwealth countries. But now we have taken this further and are planting a sapling from all countries of the world," said Kumar.

Similarly, 147 rainwater harvesting plants will be set up in various points in the NDMC jurisdiction.

when it does not rain

interconnected tanks will ensure zero wastage of water

## 650 native saplings planted at Asola Bhatti wildlife sanctuary

**hindustan times**  
**green mission**

HT Correspondent  
hreporter@hindustantimes.com

**NEW DELHI:** As many as 100 participants planted 650 saplings of 22 native species at the Asola Bhatti Wildlife Sanctuary on Saturday, in an effort to promote native species over foreign ones.

Over the years, Delhi's forests have been invaded by foreign species such as the 'vilest khar', which are not conducive to the city's environment.

The tree has overtaken all other native species, especially in the Ridge area and has had a negative impact on the forest's biodiversity.

Some species native to Delhi are Bahal (*Acacia nilotica*), Karli (*Caparis decidua*), and Ber (*Ziziphus nummularia*), Piyabi (*Acacia modesta*), Bulahi, Katha, Rong (*Acacia sp.*), Dhak (*Butea monosperma*), Pihu (*Salvadora* persica), Hingot (*Balanites aegyptiaca*).

The Delhi government has also spoken about the need to plant native species.

The forest department has nurseries that cultivate native species and the Delhi Jal Board announced that it would only plant native varieties in all its plantation drives. A series of stories on Delhi's forests, published last week, had also spoken about how native species were best suited to the city as they are a product of thousands of years' of evolution and natural selection.

The First Delhi Seed Bank plantation drive was conducted by Conservation Education Centre and Delhi, I Love You organisations.

The drive was supported by Delhi Tourism and Delhi Jal Board.

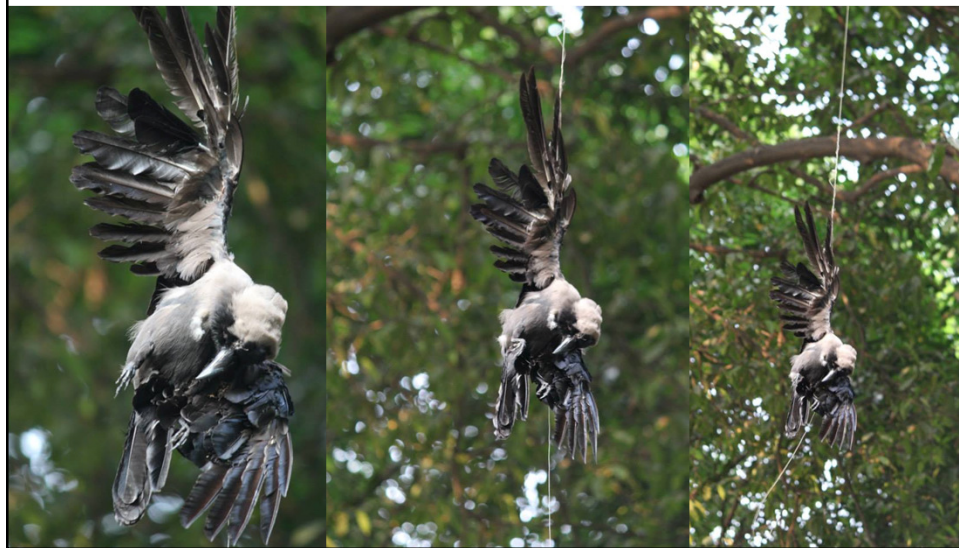
Participants at the First Delhi Seed Bank plantation drive in New Delhi on Saturday.  
RAVI CHOUDHARY/HT







## Kite Flying



# Presidium



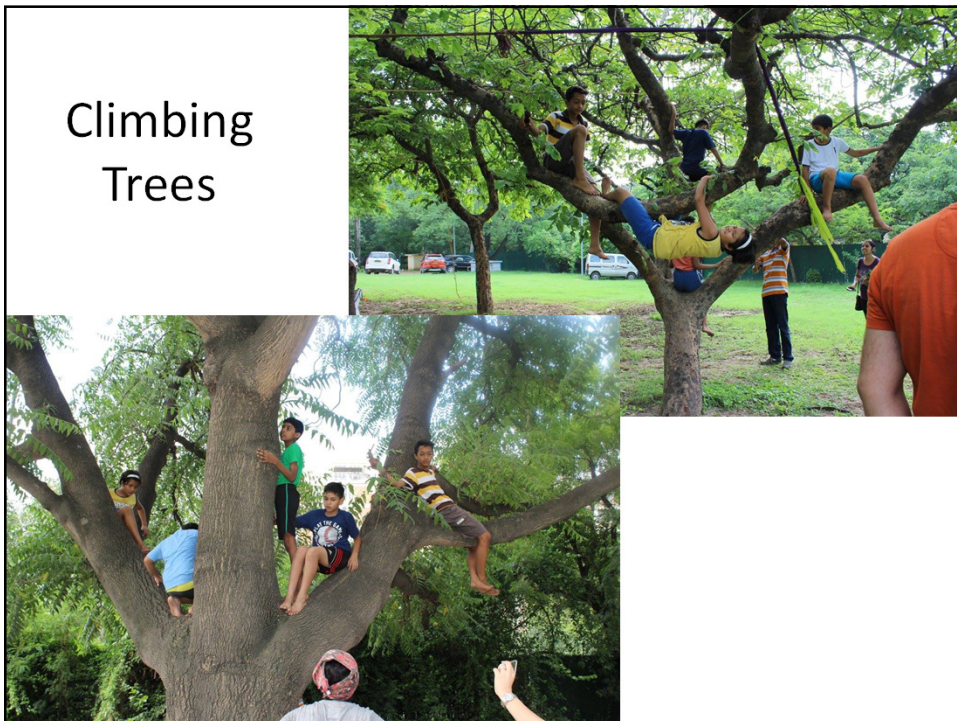
# Presidium



# Delhi Organic Farmers Market

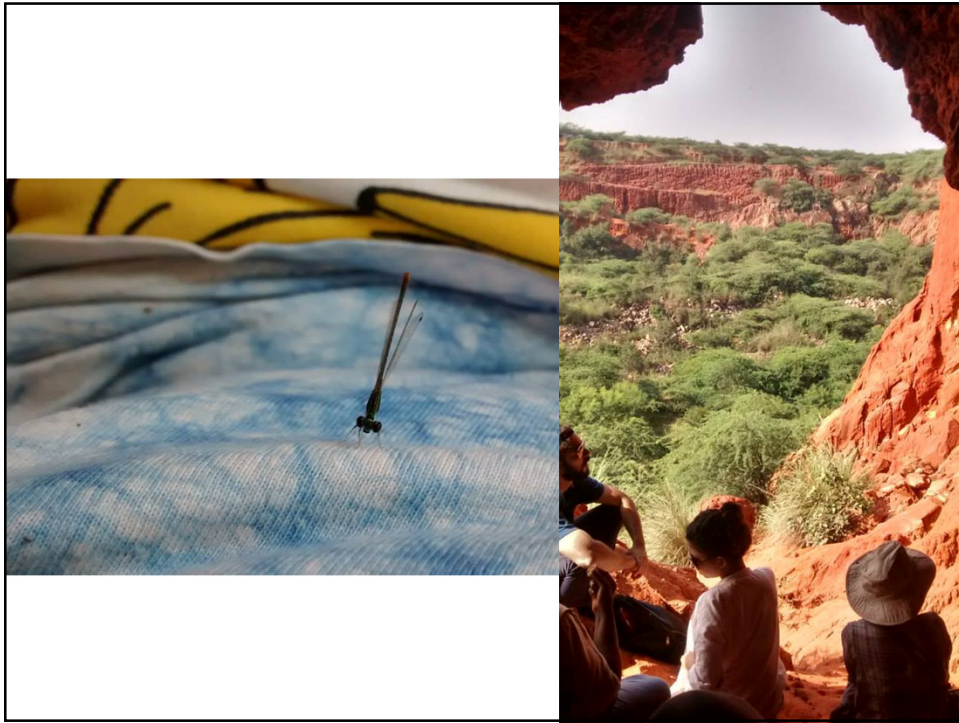


# Climbing Trees







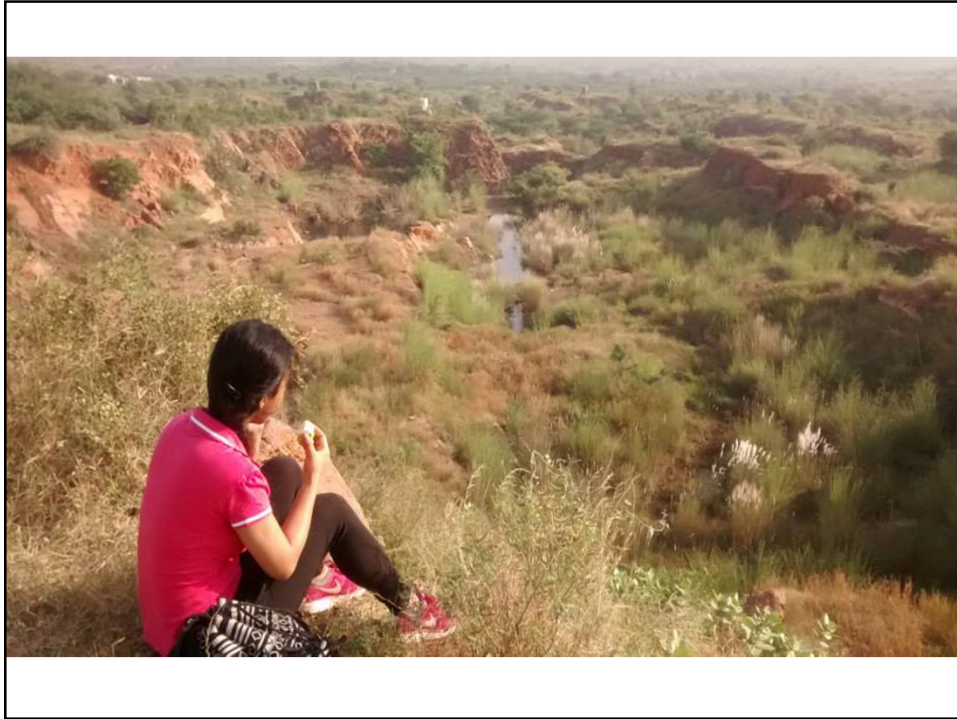




Aravali  
Biodiversity  
Park

# Aravali Biodiversity Park





# MOLC





MOLC







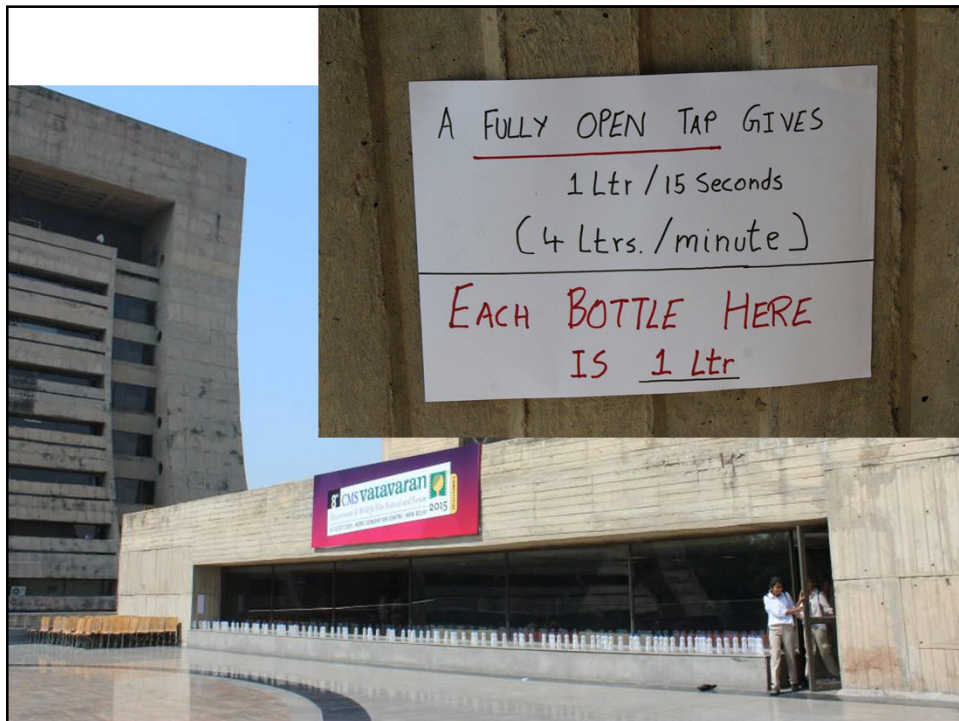














Desi Kutta





## Mira Model School



## IIT Delhi



## Chandu The Wonder Pig





# DE - CHOKE TREES

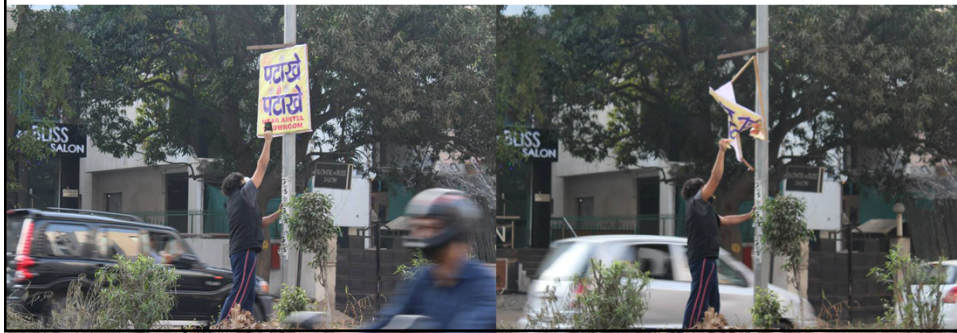








Say NO to fireworks





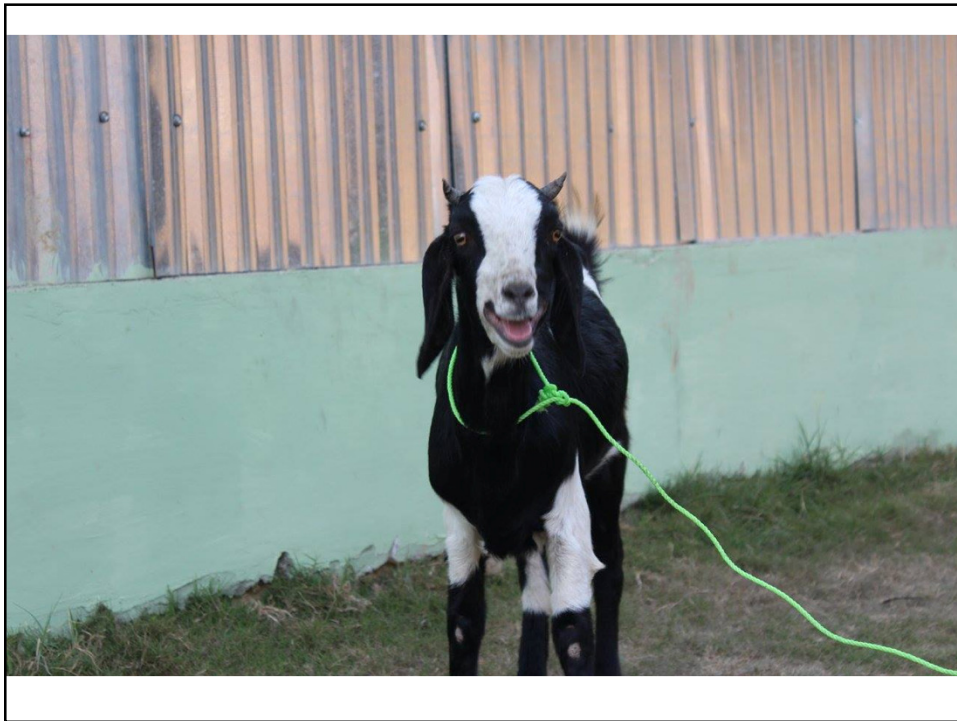
## VEGAN Picnic



## ART COMPETITION







# Sarson Satyagraha








**This is Billu.**

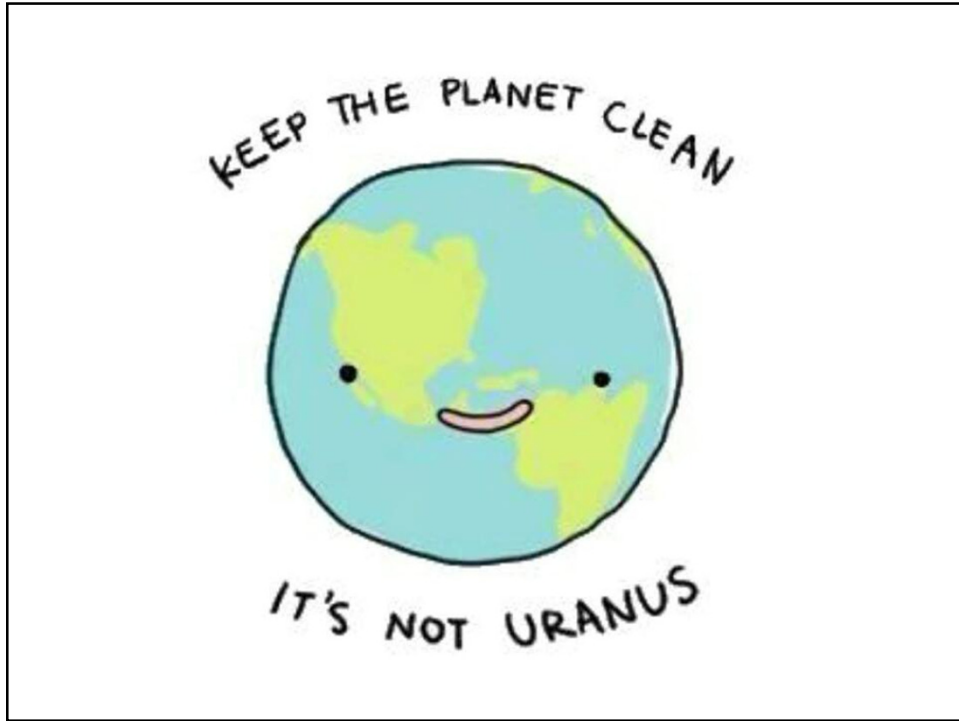
**Billu does not cut trees and he does not pay others to cut trees.**

**Billu knows that only FOOLS cut trees.**

**Billu is smart.**

**Be like Billu.**





*Thank  
You*

