



## The 16th GRIHA Summit

### Design Competition Brief

# *'Accelerating Climate Action in the Built Environment: An Exploration Through Centuries and Beyond'*

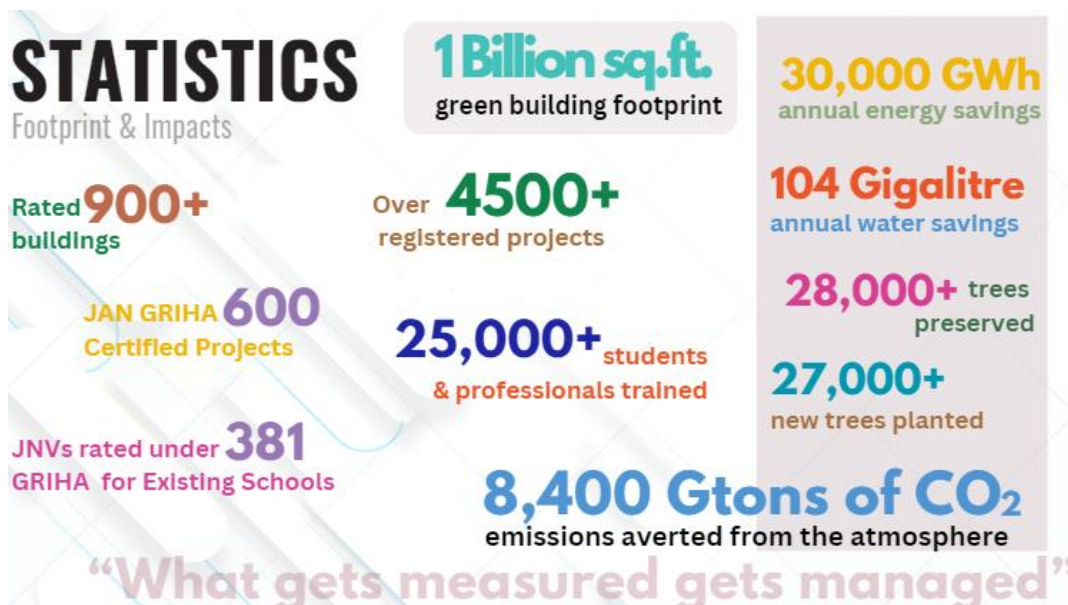
Date: 4<sup>th</sup> & 5<sup>th</sup> December 2024

Location: India Habitat Centre, New Delhi

### About GRIHA Council

**Green Rating for Integrated Habitat Assessment (GRIHA) Council** is an autonomous, not for profit society jointly set up by The Energy and Resources Institute (TERI) and Ministry of New and Renewable Energy (MNRE), Government of India to promote and administer the development of sustainable buildings and habitats in India. GRIHA Council is recognized as the 'National Rating System for Green Buildings in India'.

GRIHA Council evaluates the environmental performance of a building holistically over its entire life cycle, thereby providing a definitive standard for green buildings and sustainable habitats. GRIHA attempts to minimize a building's resource consumption, waste generation, and overall ecological/environmental impact by comparing them to certain nationally acceptable limits / benchmarks.



## GRIHA Summit

Over the years, GRIHA Council has been hosting its annual summits to deliberate on issues of national discourse in association with distinguished entities from national and international spheres, encompassing government bodies, industry partners, multilateral and bilateral organizations, academia and building practitioners. The past summits had been designed on themes such as “Empowering Sustainable and Resilient Communities”, “Towards Net Positive Habitats”, “Restoring Green Economy” and “Transforming Habitats”.



## The 16th GRIHA Summit

The 16<sup>th</sup> GRIHA Summit is scheduled to be held on **4<sup>th</sup>- 5<sup>th</sup> December 2024** at India Habitat Centre, Lodhi Road, New Delhi, India on the theme '**Accelerating Climate Action in the Built Environment**'. Climate change mitigation is a race against time due to rapid environmental damage, thus there is an urgent need to accelerate climate action. Towards this, GRIHA Council aims to address the urgent need to adopt sustainable practices in the built environment whilst advancing innovative solutions to mitigate the adverse effects of climate change.

This year GRIHA Council is pleased to introduce the **GRIHA Regional Conclaves** for the development of sustainable habitats and resilient communities at the regional level. The GRIHA Regional Conclaves for this fiscal year are conducting in Lucknow, Hyderabad, and Jaipur.

As a part of the 16th GRIHA Summit, GRIHA Council is organizing a design competition based on the theme '**Accelerating Climate Action in the Built Environment: An Exploration Through Centuries and Beyond**'.

This competition invites participants to design a building or complex with preparation of its physical model that reflects the evolution of architectural styles and technologies

across three distinct centuries and beyond; the 19th, 20th, 21st centuries, and the future, with a strong focus on accelerating climate action. The goal is to explore how architectural practices have evolved to address climate challenges and how future innovations can further enhance climate resilience and sustainability.

The competition will provide participants numerous opportunities to interact and demonstrate their comprehension on the idea of climate action in creative ways.

**Scope:**

The participants will have to design a multi-era building or complex that visually and functionally integrates climate action strategies from the 19th, 20th, and 21st centuries, and anticipates future advancements. The design should:

1. **Historical and Future Integration:** Incorporate and reflect climate action strategies from each specified century. The building should show how these strategies have evolved and how future approaches might further improve sustainability and climate resilience. This shall include, but is not limited to, energy efficiency, carbon reduction, climate resilience, sustainable material use, and innovative technologies that reduce environmental impact.
2. **Century-Specific Features:**
  - 19th Century: Demonstrate early climate action strategies, such as passive design principles, early energy efficiency measures, and the use of locally sourced materials.
  - 20th Century: Showcase mid-century advancements in climate action, including technological innovations, the rise of energy-efficient systems, and the incorporation of sustainability principles in modernist architecture.
  - 21st Century: Highlight contemporary climate action strategies, including advanced materials, renewable energy systems, green building certifications, and integrated smart technologies.
  - The Future: Propose innovative, speculative climate action strategies that could define future architectural practices, such as cutting-edge materials, autonomous systems, and advanced ecological integration.
3. **Concept Note, Drawings & Physical Model:** Submit a detailed concept note explaining the design's integration of century-specific climate action strategies, supported by architectural drawings, 3D visualizations models and physical models that visually represent the building's various temporal aspects.
4. **Exhibition Opportunity:** Shortlisted entries will be invited to exhibit their designs during the 16<sup>th</sup> GRIHA summit, offering an opportunity for broader visibility and engagement.

## **Submission Requirements:**

### **1. Design Submission:**

- **Concept Note:** A comprehensive document outlining the design's approach to integrating and evolving climate action strategies across the four specified centuries. This should include historical context, design principles, and anticipated future innovations. Provide a thorough sustainability strategy outlining how the design employs innovative solutions to accelerate climate action, including energy efficiency measures, water conservation, material sustainability, and resilience against climate-related events.
  - **Prepare detailed architectural drawings,** including floor plans, elevations, sections, 3D visualizations and other means may be used to explain the design proposal.
  - **Physical Models:** Detailed physical models representing the building's features across the four centuries to be exhibited during the summit. Models should be scale-appropriate and effectively communicate the design's climate action strategies.
2. **Sustainability Strategy:** Include a section in the concept note detailing how each centuries climate action strategies are realized in the design and how they contribute to the building's overall sustainability.
3. **Exhibition Preparation:** Prepare to exhibit the design at the summit. This includes ensuring that physical models are transportable and exhibit-ready and accompany these with a written narrative summarizing the design's key features and innovations.

The submission shall be done in 3 stages, in the following manner.

#### **Stage 1:**

- All participants to submit the concept note outlining their design's approach to integrating and evolving climate action strategies across the four specified centuries.

#### **Stage 2: (Only for shortlisted entries)**

- Submit photographs of the work in progress physical model which is to be exhibited during the summit.

#### **Stage 3: (Only for shortlisted entries)**

- Prepare detailed architectural drawings, including floor plans, elevations, sections, 3D visualizations and other means may be used to explain the design proposal.

- Prepare physical models to exhibit the design at the summit. Accompany these with a written narrative summarizing the design's key features and innovations.

### **Judging Criteria:**

1. **Historical and Future Integration:** How well the design integrates and showcases climate action strategies from the 19th, 20th, and 21st centuries, and its vision for future innovations.
2. **Innovation and Impact:** Creativity and effectiveness of proposed climate action strategies, particularly in the future-oriented aspects of the design.
3. **Aesthetic and Functional Quality:** Quality of the design in terms of aesthetic appeal and functional performance.
4. **Model Representation:** Clarity and effectiveness of physical models in representing the design's century-specific features and climate action strategies.

### **Eligibility:**

The competition is open to architects, designers, and students globally. Participants may enter individually or as part of a team.

### **Awards:**

Winners will be awarded with appealing prizes, including certificates of achievement, featured publications, and additional exclusive rewards along with a cash prize as follows:

- 1<sup>st</sup> Prize: Rs 25,000
- 2<sup>nd</sup> Prize: Rs 15,000
- 3<sup>rd</sup> Prize: Rs 10,000

All participants will also get a complementary entry pass to the 16<sup>th</sup> GRIHA Summit and a chance to join our summit sessions.

### **Guidelines:**

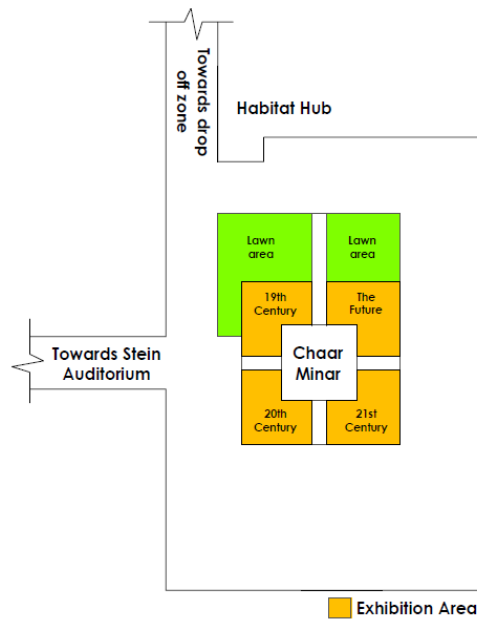
- All the stage wise entries are to be submitted at the mail ID: [events@grihaindia.org](mailto:events@grihaindia.org)
- Send your entries with the subject line and file name- **“Competition Name\_Individual/Group Name”**.
- Late submissions will not be entertained.
- The soft copy file of the concept note should not be corrupted or incomplete or in low resolution.
- Any misconduct such as exposing identity through firm/institution name, participant(s) name through exhibits or in any other form during the final presentation will be disqualified.
- There are no registration fees for this competition. However, registration of participation through the registration link is mandatory.

- All entries will be evaluated by a jury. Decisions by jury will be final.
- All shortlisted entries shall be informed via email and shall be called to present their submissions during the 16<sup>th</sup> GRIHA Summit.
- Travel cost and stay arrangements will have to be borne by the participants themselves.
- All entries **must be innovative and original**.
- If you have any questions or need further information, please write to us at: [events@grihaindia.org](mailto:events@grihaindia.org)

### **Important Dates:**

- Submission deadline for concept note: 30<sup>th</sup> September 2024
- Announcement of shortlisted entries: 12<sup>th</sup> October 2024
- Submission of photographs of the work in progress physical model (only for the shortlisted entries): 4th November 2024
- Final design showcase and physical model exhibition in IHC: 3rd to 5th December 2024

### **Exhibition Space Specifications:**



*Plan and view of Char Minar in India Habitat Centre, New Delhi*

**Registration link:**



URL: <https://forms.office.com/r/bJ60HV8db0>

**Contact Information:**

For further information, please contact:

1. Mr. Ankit Bhalla, Manager  
Mobile number: +91 8285522880
2. Mr. Sanchit Malik, Deputy Manager  
Mobile number: +91 9888893961

---

*We look forward to your innovative designs that highlight the evolution of climate action strategies and envision the future of sustainable architecture.*

---