



GRIHA is a tool to evaluate reductions in emission intensity through habitats and has been announced as a part of mitigation strategy for combating climate change in India's 'Nationally Determined Contributions' submitted to UNFCCC by the Ministry of Environment, Forest & Climate Change.



Distribution of Points

Max. Points	Section
12	Energy management
8	Water management
8	Occupant health and comfort
9	Well-being and social aspects
6	Air quality
7	Solid Waste Management
50	Total



GRIHA Council
 India Habitat Centre, 3rd Floor, Core 1B,
 Lodhi Road, New Delhi, Delhi 110003
 Tel.: (+91 11) 46444500/24339606-08
 E-mail: info@grihaindia.org
 Website: www.grihaindia.org



- Rating system especially designed for existing schools.
- Self-Assessment Tools: Simplified user-friendly calculators for all sections—Energy management, Occupant health and comfort, Air quality, Water management, Solid waste management, Well-being and social aspects, and Bonus.
- Third-party consultants are not required.
- Informative exercise for students as it becomes a demonstration project through which the students can learn the methods of reducing their environmental impacts.
- Performance of schools can be assessed and observed through energy and water bills.
- Prepare students to respond to climate change by engaging them in sustainable development.

Why you should adopt 'GRIHA for Existing Schools'?



GRIHA FOR EXISTING SCHOOLS

(GREEN RATING FOR INTEGRATED HABITAT ASSESSMENT)

About GRIHA Council

GRIHA Council is an independent not for profit society jointly set up by The Energy and Resources Institute (TERI) and the Ministry of New and Renewable Energy (MNRE) to promote the development of sustainable buildings and habitats in India.

About GRIHA

GRIHA (Green Rating for Integrated Habitat Assessment) GRIHA is a Sanskrit word meaning – 'Abode'. Human Habitats (buildings) interact with the environment in various ways. GRIHA attempts to minimize a building's resource consumption, waste generation, and overall ecological impact within certain nationally- acceptable limits /benchmarks.

What is 'GRIHA for Existing Schools'?

'GRIHA for Existing Schools' rating system has been jointly developed by GRIHA Council and The Energy and Resources Institute (TERI). It is an assessment tool cum training module for school students to evaluate the environmental performance of their school against nationally-accepted benchmarks.

India's own Rating System for Green Buildings
 – India's INDCs
 (Action Plan to Combat Climate Change)



GRIHA FOR EXISTING SCHOOLS

ENERGY MANAGEMENT

Criterion 1

Per capita CO₂ emissions – building and transport

Criterion 2

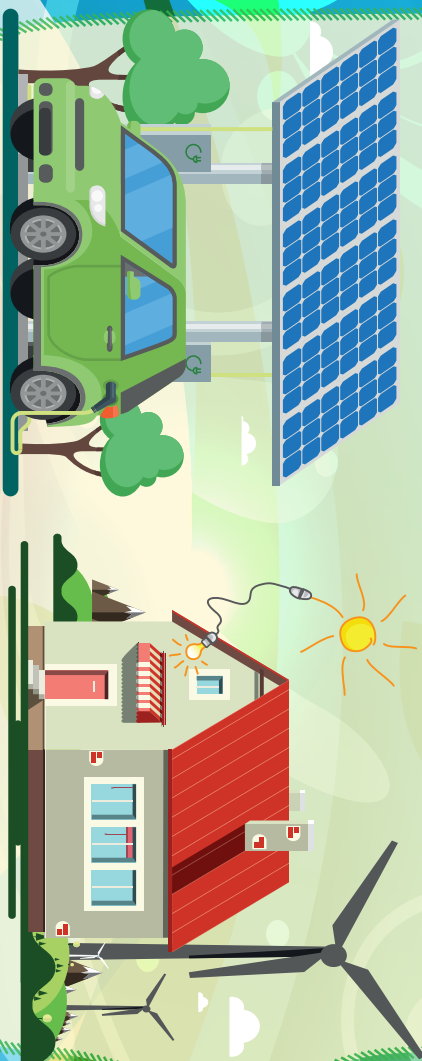
Operation and maintenance

Criterion 3

Efficient outdoor lighting

Criterion 4

Onsite renewable energy usage



OCCUPANT HEALTH AND COMFORT

Criterion 5

Visual comfort

Criterion 6

Thermal comfort

Criterion 7

Acoustic comfort



AIR QUALITY

Criterion 8

Indoor air quality

Criterion 9

Number of trees in school campus



WATER MANAGEMENT

Criterion 10

Optimizing annual water consumption

Criterion 11

Rainwater harvesting



SOLID WASTE MANAGEMENT

Criterion 12

Waste segregation

Criterion 13

Treat organic and inorganic waste



WELL-BEING AND SOCIAL ASPECTS

Criterion 14

Health and hygiene

Criterion 15

Social initiatives

