

GRIHA & NASA (NATIONAL ASSOCIATION OF STUDENTS OF ARCHITECTURE), INDIA COLLABORATION

GRIHA Council and NASA India have signed a Memorandum of Understanding to jointly promote the concept of green buildings and sustainable habitat through the GRIHA platform. GRIHA trophy at NASA annual conventions is conducted as a part of this MoU to sensitize students towards sustainable design.



EXEMPLARY PERFORMANCE

"Exemplary Performance Awards" are given every year, to recognize the efforts of projects that have met sustainability goals, to acknowledge their commitment to the cause of sustainable development. The awards given for GRIHA-new construction are specific to GRIHA projects, whereas awards given under existing building categories are open to all. The different categories for the "Exemplary Performance Award" are listed below:



GRIHA COMMUNITY

GRIHA CERTIFIED PROFESSIONALS

The GRIHA Certified Professionals or GRIHA CP is a cadre of professionals from diverse fields, who are equipped with the knowledge of the GRIHA rating system. Eligibility Criteria: Doctorate/Postgraduate/Graduate/ Diploma holders in any stream can appear for the exam. Examination Process: The examination is held once a month. It's an online examination which can be given from your home/office.

GRIHA EMPANELLED CONSULTANT

An opportunity for Green Building Consultation firms who are willing to be associated with GRIHA Council and promoting the rating and its variants pan India.

GRIHA EVALUATORS

GRIHA evaluators are subject experts and professionals who have qualified the 'GRIHA exam for Evaluators'. They later engage with assessment of GRIHA project documentation. Eligibility Criteria: Diploma/ Undergraduate/ Postgraduate in any stream with minimum 3 years of work experience. Examination Process: Postgraduate/Undergraduate in Architecture or Engineering with minimum 2 years of work experience. The Evaluator examination is held on a quarterly basis. You are advised to select a module, examination date in the registration form.

ASSOCIATE MEMBERSHIP

GRIHA Council offers membership opportunities to various stakeholder groups that are associated with the building industry, whether it is direct (developers, contractors, designers, engineers, consultants etc.) or indirect (product manufacturers, students, or the general public) associations.

ACE MEMBER

ACE (Agents of Change for Environment) is a student membership programme to bring together students of various disciplines to disseminate knowledge about GRIHA way of greening INDIA.

CATALYST MEMBER

The CATALYST membership is developed for academic institutions across the nation. Students of the member institutions can avail attractive benefits at subsidized costs and even complimentary.

GRIHA APEX MEMBER

GRIHA APEX membership is an important platform for individuals from any field to get associated with GRIHA and avail a number of benefits including discounts on GRIHA Manual, learning Centres, other GRIHA products and events.

GRIHA EMPANELLED AUDITORS

Empanelment of GRIHA green building auditors has been developed with an objective of creating a database of BEE certified energy managers or auditor or ECBC master trainer or ECBC Expert Professional capable of providing technical support for GRIHA evaluation.

MOUs

GRIHA has been fortunate to have signed MoUs with various prestigious organizations. These MoUs have been signed with likeminded organizations working towards protecting the environment.

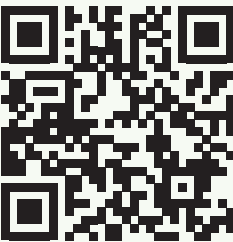
SUSTAINABLE BUILT-ENVIRONMENT

An environment created for mitigating and adapting to climate change, while working towards safeguarding the natural environment.

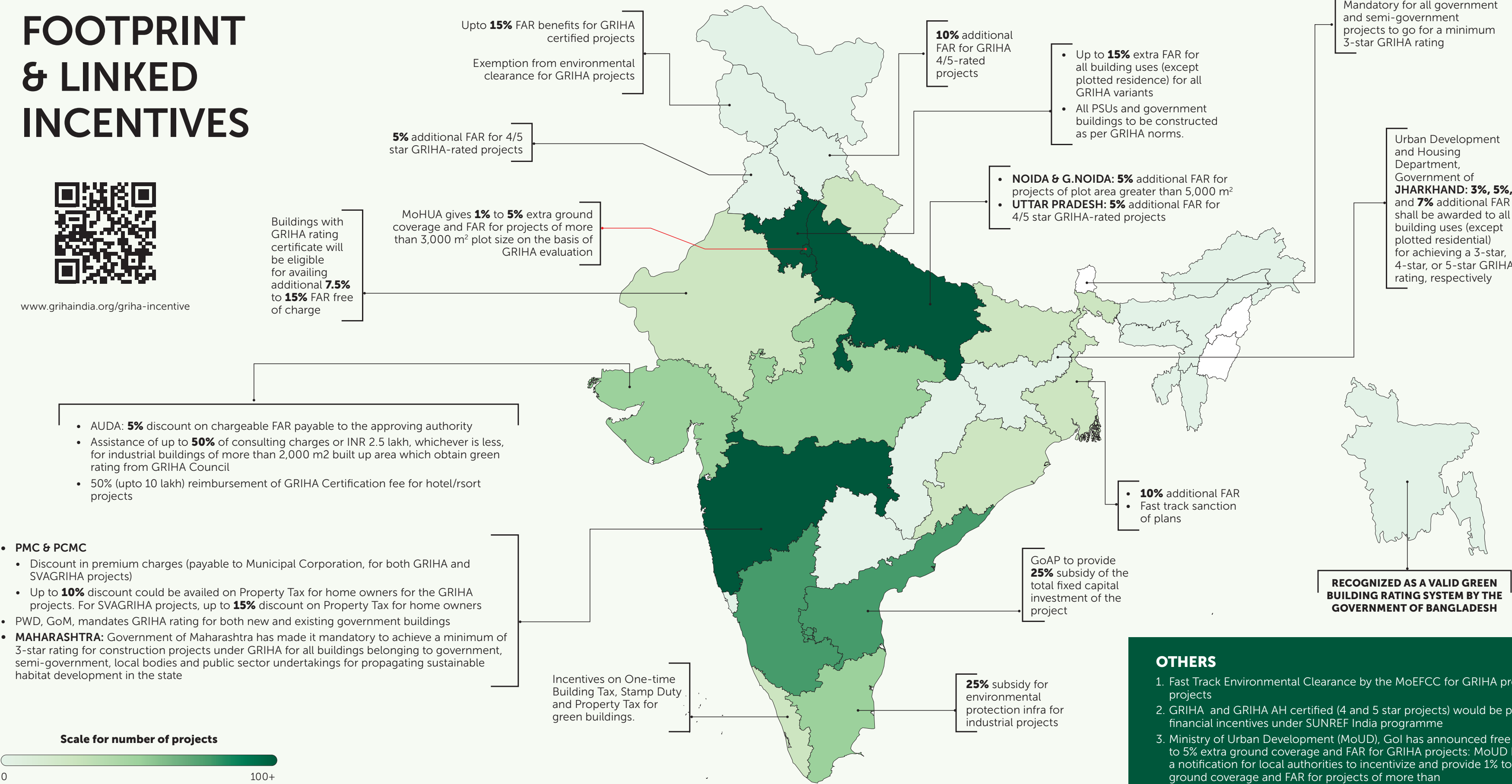
Such an environment ensures



GRIHA PROJECTS' FOOTPRINT & LINKED INCENTIVES



www.grihaindia.org/griha-incentive



BENEFITS OF SUSTAINABLE BUILT-ENVIRONMENT



GRIHA Council presents

India's own Rating System for Green Buildings

—India's INDCs

Action plan to combat climate change

Let us deliver India's COP26 commitment of 'Net Zero' emissions by 2070

Ministry of New and Renewable Energy, Government of India

THE ENERGY AND RESOURCES INSTITUTE

Creating Innovative Solutions for a Sustainable Future

OPEN HERE

WHO ARE WE?

GRIHA Council is an independent society established jointly by The Energy and Resources Institute (TERI) and Ministry of New and Renewable Energy (MNRE), Government of India (GOI). It promotes and facilitates **GRIHA-National Rating System for Green Building in India**, which is a design and evaluation tool for green buildings and habitats.

WHAT IS GRIHA ?

It is a tool which evaluates the environmental performance of a building holistically over its entire life cycle, based on quantitative and qualitative criteria, thereby providing a definitive standard for green buildings and habitat.



BENEFITS OF ADOPTING GRIHA RATING

- Reduced destruction of natural areas, habitats and biodiversity, and reduced soil loss from erosion
- Ensures health and well being of people associated with the project
- 40 to 65% Reduced water consumption
- Ensures waste management during construction and operation
- 30 to 50% reduced energy consumption. Renewable energy integration to offset grid demand
- Increased user productivity
Enhanced image and marketability



INDIA'S OBJECTIVES

GRIHA ratings and certifications are formulated to mitigate and adapt to the climate change issues and achieve the commitments made for **'Net Zero' emissions by 2070 at COP 26**.



GLOBAL OBJECTIVES

GRIHA's aim is in line with the attainment of the Sustainable Development Goals (SDGs). The detailed criteria outlined by GRIHA address the SDGs that deal with the aspects of clean energy, clean water and sanitation, sustainable cities, responsible consumption and production, and climate action.

GRIHA RATINGS AND CERTIFICATIONS

Rating-New Construction

SVAGRIHA (Simple Versatile Affordable GRIHA)

All new construction projects with built up area less than/equal to 2500 sq.m. are eligible for rating under SVAGRIHA.

GRIHA

All new construction projects with built up area more than 2500 sq.m. (excluding parking, basement area, and typical buildings) are eligible for rating under GRIHA.

GRIHA for AH

Affordable Housing project boundary must comply with the applicable municipal, state and local building bylaws related to environment and regulations in place where the project is located.

GRIHA for Large Developments (LD)

The intent of GRIHA LD is to provide a consolidated framework for assessment of environmental impacts of large scale developments.

Rating-Urban Settlements

GRIHA FOR CITIES

The GRIHA for CITIES rating has been structured as a framework for sustainable development of a city, to be achieved by measuring 'greenness' of existing as well as proposed cities .

Rating-Existing Buildings

GRIHA for Existing Building

All operational buildings having a built-up area greater than 2,500 sq. m. are eligible for rating under GRIHA for Existing Buildings rating.

GRIHA for Existing Day Schools

All day schools (excluding hostel/ residential facilities) which have been operational for at least 1 year are eligible for rating under GRIHA for Existing Day Schools rating.

Certifications

JAN GRIHA

All new individual residential projects with built-up area of less than/equal to 200 sq.m. are eligible for JAN GRIHA certification.

Decarbonizing Habitat Program

Projects operational for over a year with existing infrastructure and permanent employees will be eligible for the certification.

GRIHA Water Positive Certification

The certification is qualitative cum quantitative analysis of water consumption of organizational campuses, to identify the strategies adopted to reduce, reuse, and recycle water at building and site level.

Zero Waste Certification

The certification is an assessment of the measures adopted by organizations for reducing, reusing, recycling and upcycling wastes to avoid burden on landfills.

Charitable Activities

Building Fitness Indicator (BFI)

- Initiative to contribute towards the welfare of people to tackle the novel corona crisis.
- Developed as a self-assessment tool that allows building/organization owners to measure the preparedness of the workplaces for workforce in order to prevent exposure to COVID-19.

Plantation Drive

Conducted as a step towards combating environmental issues of deforestation, soil erosion to enhance the balance of the environment.

Clean up drives

Clean-up Drive - conducted to spread awareness about waste management.

Resident's Welfare Association awareness programs

Conducted for housing societies to spread environmental awareness amongst general masses

KEY FEATURES OF GRIHA

- Indigenous Rating System**
The diverse climatic conditions of the country become the underlying factor for the formulation of GRIHA rating.
- Process driven & performance oriented**
GRIHA considers all the stages, including design, procurement, and implementation to avoid disruption to the ecological system and construct high-performing sustainable structures.
- Adoption of holistic approach towards sustainability**
Focuses on economic, environmental and social sustainability
- Integrated Team Approach**
The process of GRIHA rating aims at engaging all team members and hand holding through the entire course of construction.

RECOGNITIONS

- Adopted as "National Rating System" by MNRE in 2007
- "Tool for implementing RE in the building sector"- 'The Climate Reality Project' - an organization founded by Mr. Al Gore 2008
- UNEP-SBCI has developed the "Common Carbon Metric", for international building energy data collection-based on inputs from GRIHA 2010
- Fast track environmental clearance for GRIHA pre certified projects by The Ministry of Environment and Forests (MoEF)
- "To recognize energy-efficient buildings, as well as to stimulate their large scale replication, India has developed its building-energy rating system GRIHA, based on 34 criteria such as site planning, conservation and efficient utilization of resources" - INDC submitted to UNFCCC in 2015

TYPES* OF PROJECTS GRIHA RATES

- Homes
- Hotels
- Offices
- Schools
- Hospitals
- Apartments
- Institutes
- Sports Complex
- Factories
- Airports
- Large campuses
- Shopping Complexes
- Restaurants
- Banks
- Museums

*Not limited to the aforementioned list

TRAINING & AWARENESS

- 1-day training programme**
General awareness programme on green buildings and sustainable habitats through GRIHA rating.
- 3/5/7-day training programme (customised on demand)**
Intensive training about GRIHA requirements to various stakeholders/organisations.

Learning Centre & E-Modules
Primary aim of the learning centre is to enhance the outreach and to ensure that it is easily accessible to every individual across the nation.
The e-course elaborates on criteria requirements of the GRIHA V.2019 through interactive sessions and thought provoking quizzes.

Green Tours
Provides hands-on understanding of the green features in real buildings to students and professionals.

GRIHA

Green Rating for Integrated Habitat Assessment



Follow us



GRIHA COUNCIL

CORE 1B, 3rd Floor
India Habitat Centre,
Lodhi Road, New Delhi-110003
Tel: (+91 11) 46444500/24339606-08
info@grihaindia.org
www.grihaindia.org

PRODUCT CATALOGUE

The product catalogue* provides information about verified green building products meant to be used to make sustainable buildings and habitats.

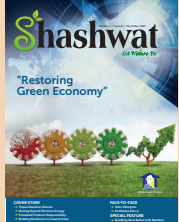
- Acoustic Insulation
- Adhesives
- Air Filtration
- Irrigation System
- Fly-ash bricks/AAC Block
- Ceiling Fans
- Low-VOC Paints
- Energy Efficiency
- Ready Mixed Concrete
- Sealants

*Not limited to the aforementioned list

Publications

Shashwat

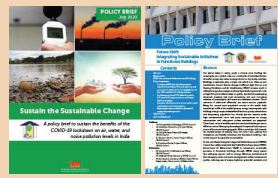
- The Annual Magazine of GRIHA Council "Shashwat - Let Nature Be"
- It encompasses articles, interviews, testimonials and blogs from experts with diverse backgrounds who have significantly contributed to new areas of research in the domain of Sustainability.



Policy Briefs

Policy brief prepared for:

- PWD Maharashtra on sustainable initiatives in functional buildings
- Sustaining the benefits of the COVID 19 lockdown on air, water and noise pollution in India



Research papers

Prepared for native trees in different regions of India.

Outreach

National Summit

The GRIHA Summit is the annual flagship event organized by GRIHA Council in association with key stakeholders in construction industry to discuss and deliberate on Sustainable Habitat Development in India.

Regional Summit

Regional conferences are organised to enhance local stakeholder engagement in different parts of the country.

Webinar

GRIHA Council conducts awareness workshops/training program on Green Buildings and GRIHA rating system.

Newsletter

Monthly report prepared about GRIHA activities which is sent to all its associated members.

